

Horizons[®]

Shades of Elegance™

Photo Gallery

INDEX

Shades of Elegance Shades	Page C2
Easy Stop Controls	Page C3
Roman Shade	Page C5
Cassette Shades	Page C7
Élance Sliding Panel	Page C8
Siesta Shade	Page C9
Pattern Showcase	Page C10

Strings Blackout Light Gray





Easy Stop Controls

Strings Blackout Slate

With optional Easy Stop Controls, you just give the shade a tug and let go and it gently rises to a set height!



C3

June 2014



C4

Noble Pleat Charcoal

June 2016



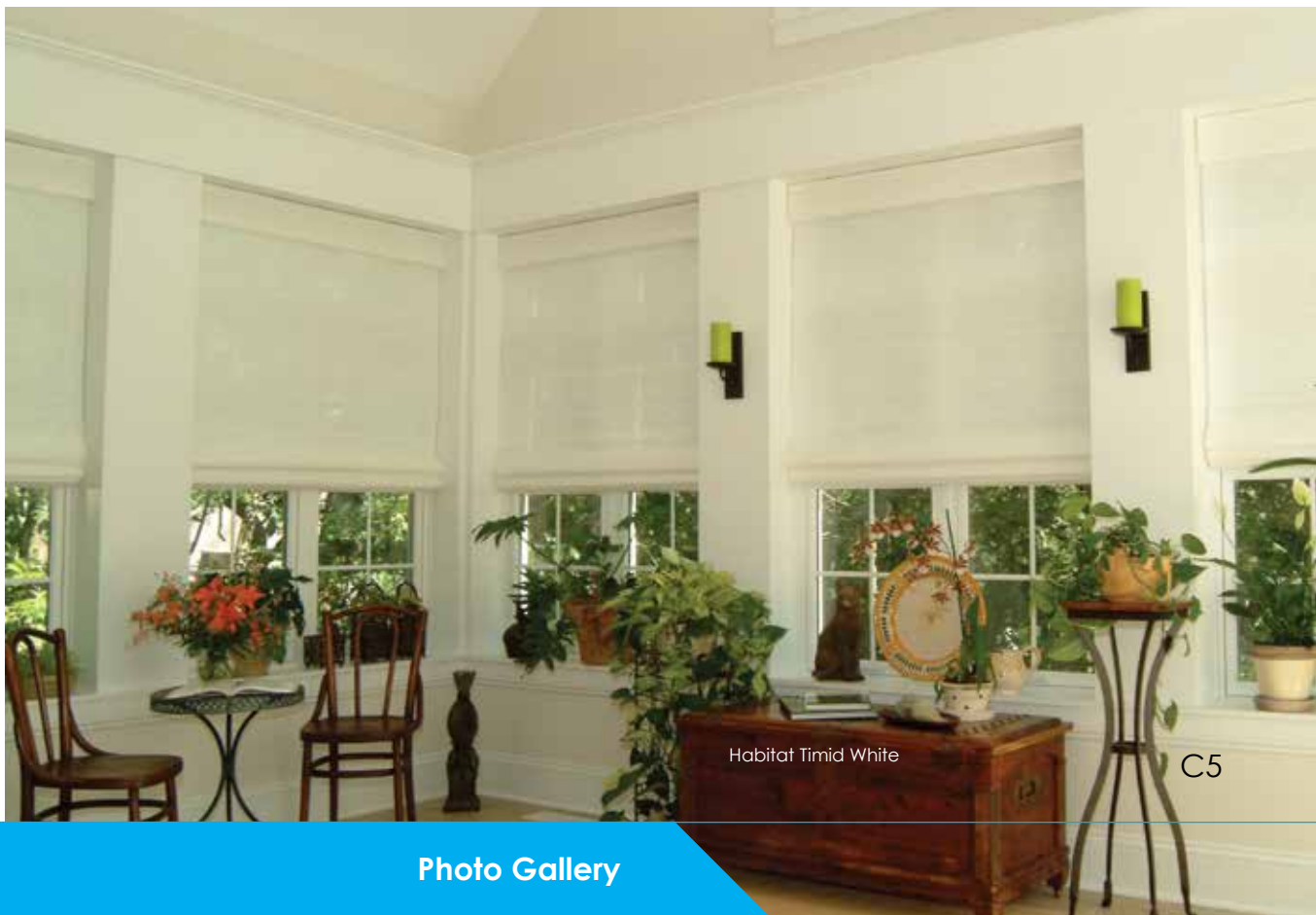
Roman Shades

Gathering White

Most Shades of Elegance™ fabrics can be crafted into sleek knife-pleated Roman shades.



June 2016



Habitat Timid White

C5



Serenity Cream

June 2016



Cassette Headrail

Spotlight Blackout Wheat

For a simple, yet elegantly finished look, select the Cassette Headrail option from the Horizons Shades of Elegance™ collection. The front of the Cassette Shade's headrail is fully wrapped with matching fabric for perfect coordination.



Petite Pleat Ivory

June 2016



Strings Blackout Slate

C7

Élance Sliding Panels

Shantung Custard

The modern version of the classic shoji panels, Élance Sliding Panels are a fashionable way to cover large windows. They can be crafted from almost any fabric in the Shades of Elegance™ collection.

See more beautiful room-setting photos on the Horizons App or in our online photo gallery. Visit horizonshades.com for details.

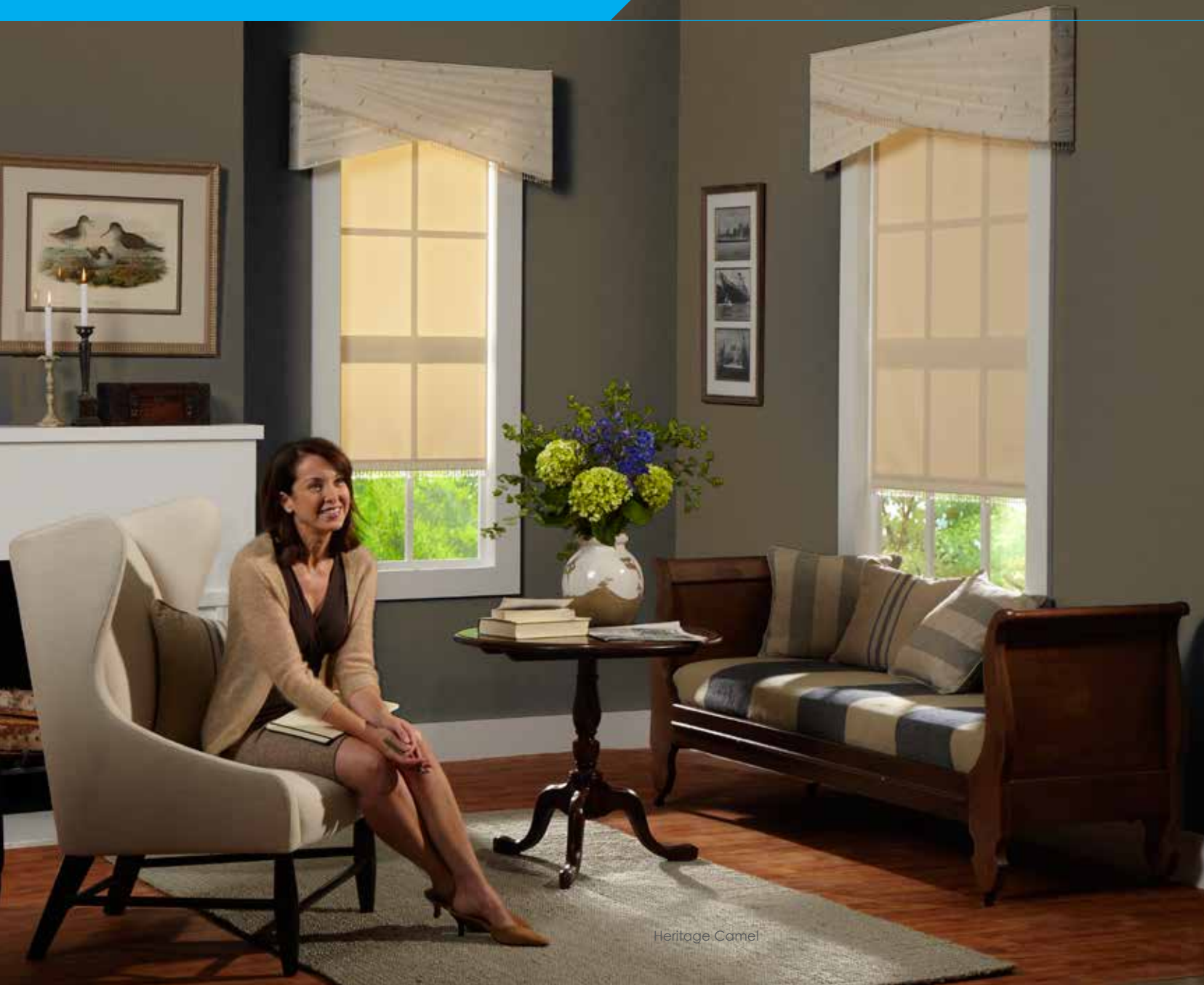


C8



Habitat Timid White

June 2014



Heritage Camel



Siesta Grey/Silver

June 2016

The Siesta mylar selections are the perfect way to tame the sun and keep your beautiful view.

C9



Noble Pleat White

C34



Shades of Elegance Information

Roller Shade Measuring

- Use a metal tape measure only.
- Round to the nearest 1/16".

INSIDE MOUNT:

Width: Measure the exact width of the window opening at the top, where the brackets will be mounted. Be precise and round to the nearest 1/16th of an inch. The workroom will deduct 1/8" (from the tip-to-tip size) to allow for clearance.

Important:

Due to the hardware requirements, there are light gaps at the edge of all IM roller shades. Easy Stop™ shades will have 1/4" gap on each side. For spring roller shades, there is a 1/2" gap on each side and for clutch roller shades there is a 5/8" gap on each side. To avoid these light gaps, consider an Outside Mount.

Height: Measure the actual height of the window. The workroom will add fabric for roll up allowance.

OUTSIDE MOUNT:

Width: Measure at the top of the window where the brackets will be placed.

For Outside Mount, order as "Cloth Measurement" and provide the total width the fabric should cover. A 1-1/2" to 2" overlap on each side is recommended to stop light gaps.

Height: Measure the actual height of the window. The workroom will add fabric for roll up allowance.

Cleaning

Shades of Elegance:

We suggest periodic vacuuming with a soft brush attachment. Wet cleaning of any shade is highly discouraged, especially those with a cotton content.

Siesta Mylar Shades:

Clean mylar shades using a soft cloth that will not scratch the surface. Special care should be taken to not dent or wrinkle the shade.

Freight Saver Shipping (Net Pricing)



Horizons Shades of Elegance are shipped at Freight Saver rates to all states in the continental U.S.A. These are NET rates. Rates are based on the width of the unit. The Maximum Charge is \$ per order. Call customer service for shipping outside the Continental United States.



Rush Charge *call for details

Guaranteed shipping for orders within 3 working days for orders up to 25 units and within 5 days for orders of 26 to 50 units. Maximum of 50 units can be on a rush order.

Horizons®

Shades of Elegance™

Product Information

INDEX

Clutch & Spring Roller Shades	Page C44
Cassette Roller Shades	Page C46
Fascia Roller Shade	Page C47
Roman Shades	Page C48
Cordless ONE Controls	Page C48
Twin Shades	Page C49
Élance Sliding Panels	Page C50
Motorized Shades	Page C51

Stratus White

February 2014

C43

Horizons

Clutch & Spring Roller Shades

Shade Styles

SPRING ROLLER SHADE:

The Spring Roller is a completely cordless spring roller shade available in a wide variety of beautiful patterns.

CLUTCH ROLLER SHADE:

The Clutch Roller version gives an added degree of control and also allows the shade to be made in larger sizes.

Standard Features

CLUTCH ROLLER:

- Heavy Duty Metal Barrel
- Color coordinated nylon Beaded Chain Controls, approximately 3/4 of shade height

SPRING ROLLER

- Heavy Duty Metal Barrel
- Clear Plastic Grip

Size Limitations

	Spring Roller	Clutch Roller
Minimum Width:	13-3/4"	8"
Maximum Width:	96"*	168"*
Minimum Height:	6"	6"
Maximum Height:	96"*	168"*

*or the max. fabric size from the index on page C36-C37 –whichever is less.

Installation Brackets

UNIVERSAL SPRING ROLLER BRACKETS are standard for Spring Roller Shades and used for wall, ceiling or inside mount. **Extended Spring Roller Brackets** are also available and add 1/2" of projection.

UNIVERSAL CLUTCH ROLLER BRACKETS are standard for Clutch Roller controls and used for wall, ceiling or inside mount. **Extended Clutch Roller Brackets** are also available and add 1/2" of projection.



Roller Wrap

Extra length is automatically added to allow for the top of the shade to wrap around the roller.

Reverse Roll

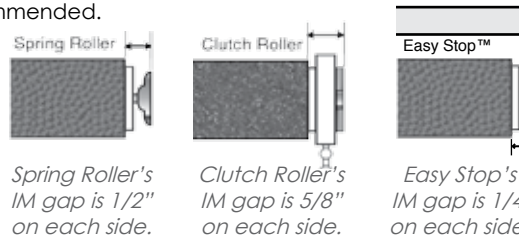
A roller shade with the material coming off the front of the roll is also available upon request.

Bottom Hems

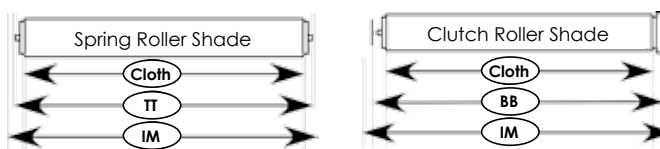
All Roller Shades are finished at the bottom with a neatly sealed bottom hem except for Siesta Mylar shades which have a metal bottom rail.

Inside Mount Edge Light Gaps

Due to hardware requirements, there are edge light gaps on all Inside Mount roller shades. To avoid light gaps, Outside Mount is recommended.



Measuring Notes



CLOTH MEASUREMENT SIZE (CLOTH) is the width of the cloth on the shade barrel. Specify "Cloth" for outside mounts when a specified fabric width is required and there is room to move the brackets.

BRACKET-TO-BRACKET SIZE (BB) is the exact size of the shade including the installation brackets. The fabric width of the shade will be approximately 1-1/4" narrower than the bracket-to-bracket size. **Bracket-to-Bracket is not used with Spring Roller Shades.**

TIP-TO-TIP SIZE (TT) is the exact size of the entire shade unit. Specify "TT" when you have made your own size adjustments. **Tip-to-Tip is not used with Clutch Roller Shades.**

INSIDE MOUNT SIZE (IM) is the exact width of the window opening. Specify "IM" when you want the workroom to make a 1/8" deduction from the window opening size so the shade will fit inside. Note, the fabric width will be about 1" narrower in a Spring Roller, 1-1/4" narrower on a Clutch Roller and 1/2" narrower on an Easy Stop.



Roller Shade Specifications and Options

Options

EASY STOP™ CONTROL OPTION

An option for Spring Roller Shades, with Easy Stop™ you just pull the shade and let go to raise it. The shade will raise smoothly to a predetermined height and stop by itself.

Easy Stop™ Easy arrives pre-mounted on a white headrail with white end plates.



For an Outside Mount unit, the headrail is mounted to the wall behind the shade.



For an Inside Mount the rail is visible above the shade. Consider adding a Classic Valance or Cassette Headrail.

Easy Stop™ may be added to a Cassette Shade in place of clutch controls.

The minimum width for Easy Stop™ is 26". Otherwise, standard Roller Shade limitations apply.

CLASSIC VALANCES

Classic Valances are available with a shade or may also be a separate board mounted top treatment.

STANDARD SPECIFICATIONS:

- Fabric Wrapped Pine Headrail (2-1/2" depth x 3/4" height)
- 6" valance height



SIZE LIMITATIONS

Minimum Width: 6"
Maximum Width: Maximum widths vary by fabric and are detailed in the fabric index on page C36-C37.

Standard Valance Height: 6"
Custom heights from 4" to 10" available at no extra charge.

MEASURING NOTES

- The workroom will deduct 1/8" from the width for an inside mount (IM).
- A Classic Valance ordered with an Outside Mount shade will be made 1" wider than the shade to allow space for the brackets.
- Outside Mounted Classic Valances ordered separately will be made the exact width ordered.

VALANCE RETURNS

Valance returns are standard on Outside Mount valances and are only supplied upon request for Inside Mount valances.

INSTALLATION BRACKETS

"L" Brackets are automatically included with all OM valances.

2" Screws are automatically included with all IM valances.

HEADRAIL SIZES

The standard board on a Classic Valance is 3/4" tall and has a depth of 2-1/2". Larger depths of 3-1/2", 5-1/2", 7-1/4" or 9-1/4" are also available for a surcharge.

DECORATIVE TRIMMINGS

Decorative Trimmings (fringe, gimp, beads and tassels) are available as a beautiful accent across the bottom of the shade and/or valance. They may be applied straight or with a Contempo Scallop.

- Horizons complete Decorative Trimmings collection is pictured on pages B20-B25.
- C.O.M. trimmings are also accepted.



SOFT ROLLER SHADES

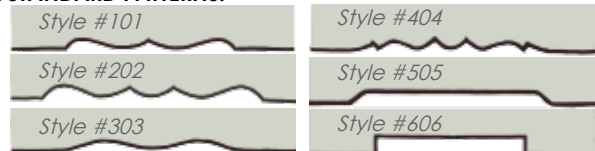
Horizons produces high fashion roller shades with our Soft Treatment fabrics & C.O.M. fabrics fused to a quality blackout roller shade. See "Soft Roller Shade" on page B110-B111.

CONTEMPO SCALLOPS

Contempo Scallops are available in 6 standard patterns or any pattern from your template. They are available on the bottom of Roller Shades, Cassette Shades or on Classic Valances. Contempo Scallops are not available on Siesta Mylar Shades.



SIX STANDARD PATTERNS:



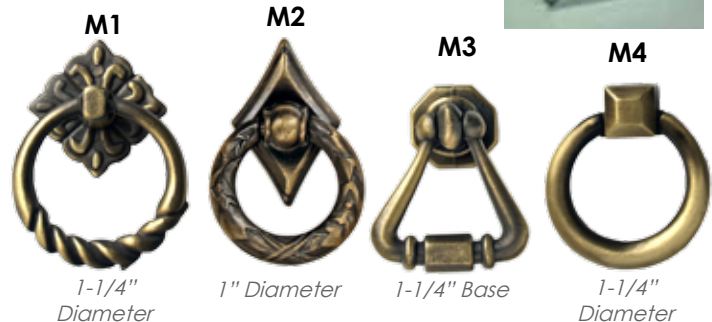
- The long point for Contempo Scallops is 8".
- Standard gimp is included with all Contempo Scallops. Please choose a color from page B25.



- Contempo Scallops are scaled to the width of the valance or shade.

GRIPS AND PULLS

A Clear Grip will be included on all Spring Roller Shades except Siesta Mylar Shades.



1-1/4" Diameter

1" Diameter

1-1/4" Base

1-1/4" Diameter



Rayon Tassels

TW=White
TI=Ivory



Rayon Rings

RW=White
RI=Ivory

MOTORIZATION: page C51

PRICING: page C38



VIEW DETAIL

Blue

2-1/4" Luster Bead Fringe •
Decorative Trim



VIEW DETAIL

Cream

2-1/4" Luster Bead Fringe •
Decorative Trim



VIEW DETAIL

Gray

2-1/4" Luster Bead Fringe •
Decorative Trim



VIEW DETAIL

Green

2-1/4" Luster Bead Fringe •
Decorative Trim



VIEW DETAIL

Red

2-1/4" Luster Bead Fringe •
Decorative Trim



VIEW DETAIL

Taupe

2-1/4" Luster Bead Fringe •
Decorative Trim



VIEW DETAIL

Beige

Bead & Tassel Fringe • Decorative
Trim



VIEW DETAIL

Pewter

Bead & Tassel Fringe • Decorative
Trim



VIEW DETAIL

White

Bead & Tassel Fringe • Decorative
Trim



VIEW DETAIL

Birch

Berlin Decorative Tape •
Decorative Trim



VIEW DETAIL

Bluebell

Berlin Decorative Tape •
Decorative Trim



VIEW DETAIL

Cloud

Berlin Decorative Tape •
Decorative Trim



VIEW DETAIL

Navy

Berlin Decorative Tape •
Decorative Trim



VIEW DETAIL

Platinum

Berlin Decorative Tape •
Decorative Trim



VIEW DETAIL

Rattan

Berlin Decorative Tape •
Decorative Trim



VIEW DETAIL

Cream

Dahlia Tassel Fringe • Decorative
Trim



VIEW DETAIL

Flax

Dahlia Tassel Fringe • Decorative
Trim



VIEW DETAIL

Pewter

Dahlia Tassel Fringe • Decorative
Trim



VIEW DETAIL

Spa

Dahlia Tassel Fringe • Decorative
Trim



VIEW DETAIL

Cream

Delaney Bead Fringe • Decorative
Trim



VIEW DETAIL

Flax

Delaney Bead Fringe • Decorative
Trim



VIEW DETAIL

Pewter

Delaney Bead Fringe • Decorative
Trim



VIEW DETAIL

Spa

Delaney Bead Fringe • Decorative
Trim



VIEW DETAIL

Beige

Greek Key Decorative Tape •
Decorative Trim



VIEW DETAIL

Gold

Greek Key Decorative Tape •
Decorative Trim



VIEW DETAIL

Spa

Greek Key Decorative Tape •
Decorative Trim



VIEW DETAIL

Sterling

Greek Key Decorative Tape •
Decorative Trim



VIEW DETAIL

White

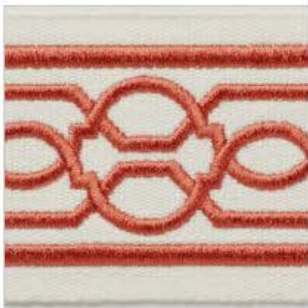
Greek Key Decorative Tape •
Decorative Trim



VIEW DETAIL

Aqua

Lattice Decorative Tape •
Decorative Trim



VIEW DETAIL

Coral

Lattice Decorative Tape •
Decorative Trim



VIEW DETAIL

Cream

Lattice Decorative Tape •
Decorative Trim



VIEW DETAIL

Fog

Lattice Decorative Tape •
Decorative Trim



VIEW DETAIL

Navy

Lattice Decorative Tape •
Decorative Trim



VIEW DETAIL

Beige

Sophia Bead Fringe • Decorative
Trim



VIEW DETAIL

Pewter

Sophia Bead Fringe • Decorative
Trim



VIEW DETAIL

White

Sophia Bead Fringe • Decorative
Trim



VIEW DETAIL

Alabaster

Standard Gimp • Decorative Trim



VIEW DETAIL

Black

Standard Gimp • Decorative Trim



VIEW DETAIL

Camel

Standard Gimp • Decorative Trim



VIEW DETAIL

Gray

Standard Gimp • Decorative Trim



VIEW DETAIL

Mocha

Standard Gimp • Decorative Trim



VIEW DETAIL

Navy

Standard Gimp • Decorative Trim



VIEW DETAIL

Shell

Standard Gimp • Decorative Trim



VIEW DETAIL

White

Standard Gimp • Decorative Trim



VIEW DETAIL

Dark Brown

Twill Tapes • Decorative Trim



VIEW DETAIL

Ebony

Twill Tapes • Decorative Trim



VIEW DETAIL

Natural

Twill Tapes • Decorative Trim



VIEW DETAIL

Navy

Twill Tapes • Decorative Trim



VIEW DETAIL

Stone

Twill Tapes • Decorative Trim



VIEW DETAIL

Tan

Twill Tapes • Decorative Trim



VIEW DETAIL

White

Twill Tapes • Decorative Trim



Cassette Roller Shades

Cassette Roller Shades

The Cassette Roller Shade is a Shades of Elegance™ Clutch Roller Shade that rolls into a stylish color coordinated cassette enclosure with a matching fabric insert.

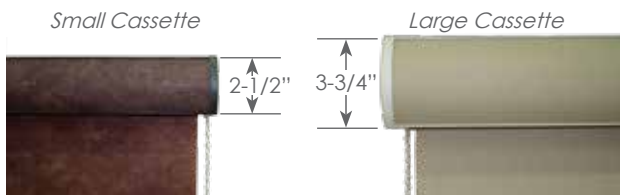
Standard Specifications

- Color-coordinated cassette
- Matching fabric inserted in cassette face
- Clutch controls with nylon beaded chain

Cassette Sizes

The Cassette Roller Shade is available in two different sized cassette enclosures. The Small Cassette measures 2-1/2" tall and the Large Cassette measures 3-3/4" tall. The workroom will select the cassette that fits your shade unless otherwise specified. Shades 60" x 60" or smaller will have the small cassette, over 60" x 60" will have the large cassette.

Orders that require shades with both Large and Small cassette enclosures will be made with both sizes, but you may specify all Large Cassettes.



Cassette and Chain Colors

- The cassette headrail has a color-coordinated base and is trimmed with a matching fabric insert. The base is available in white, vanilla, bronze, silver or black. The workroom will determine the best color match unless otherwise specified.
- The nylon beaded chain will be coordinated to the shade's fabric. Controls are approximately 3/4 of the length of the shade.

Size Limitations

	Small Cassette	Large Cassette
Minimum Width:	8"	8"
Minimum Height:	12"	12"
Maximum Width:	60"*	144"*
Maximum Height:	60"*	120"*
Minimum IM mounting depth:	1-1/4"	1-1/4"
Flush IM mounting depth:	3"	4-3/8"

*or the max. fabric size from the index on page C36-C37 –whichever is less.

Reverse Roll

Reverse Roll is not available with Cassette Shades.

Measuring Notes

- The workroom will deduct 1/4" from the width of the cassette for an inside mount (IM). The fabric will be 1-1/2" narrower than the cassette on an inside mount and 1-1/4" narrower on an outside mount (OM).
- The Cassette Shade may be ordered as Cloth Measure (CM). If ordered as CM the cassette will be 1-1/4" wider than the size ordered.

Inside Mount Light Gaps

The Cassette Roller Shade's gap is 7/8" on each side with the standard clutch controls. The gap is 3/8" on each side of the shade with Easy Stop™ controls.

Installation Brackets

Universal Cassette Shade brackets are supplied automatically with all Cassette Shades. There are two sizes, one for small cassettes and one for large cassettes. The correct size will automatically be provided.



Easy Stop™ Control Option

As an alternative to clutch controls, Cassette Shades are also available with Easy Stop™ controls. Cassette Easy Stop requires the large cassette at all sizes. See page C45 for more details.

Multiple Shades on One Headrail

Two-on-Ones & Three-on-Ones are multiple shades mounted in a single cassette.

- Provide the sizes of each individual shade AND the total width of the unit. The sizes of the individual shades must add up to the total width.
- The maximum total width for Two-on-Ones & Three-on-Ones is 144".
- The workroom will make allowances for inside mount and the spaces between shades (7/8").
- Price as separate shades.
- Multiple shades on one headrail are not available with Easy Stop™ controls on a cassette.

Contempo Scallops

Are available with Cassette Shades. See page C45 for more details.

Decorative Pulls

Are available with Cassette Shades. See page C45 for more details.

MOTORIZATION: page C51

PRICING: page C38



Fascia Roller Shades

Fascia Roller Shades

The Fascia Roller Shade is a Shades of Elegance™ Clutch Roller Shade that rolls up behind a color coordinated flat metal face.

Standard Specifications

- Color-coordinated 3-3/4" tall metal fascia, brackets and returns.
- Clutch controls with nylon beaded chain

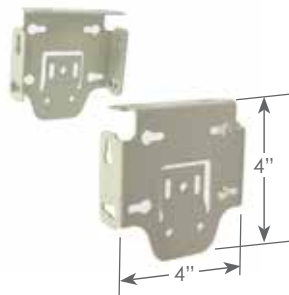
Size Limitations

Minimum Width:	8"
Minimum Height:	12"
Maximum Width:	168"*
Maximum Height:	120"*
Minimum IM mounting depth:	1-1/4"
Flush IM mounting depth:	4-1/8"

*or the max. fabric size from the index on page C36-C37 –whichever is less.

Installation Brackets

Universal Fascia Shade brackets are supplied automatically with all Fascia Shades.



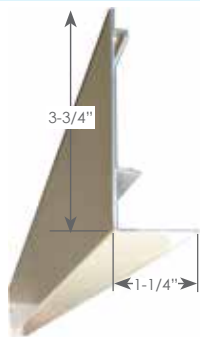
Fascia Enclosure

The fascia enclosure is 3-3/4" tall and has a 1-1/4" lip at the bottom to help conceal the roller when viewed from below.

The fascia attaches directly to the front of the brackets after the shade is installed.

The ends are finished with 4" x 4" matching metal return plates.

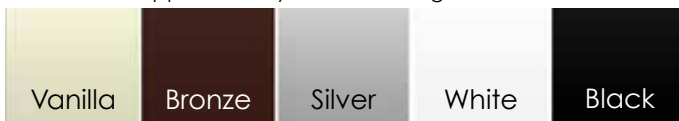
There is no top (dust cover) to the unit



Fascia and Chain Colors

• The fascia is available in white, vanilla, bronze, silver or black. The workroom will determine the best color match unless otherwise specified.

• The nylon beaded chain will be coordinated to the fascia. Controls are approximately 3/4 of the length of the shade.



Reverse Roll

Reverse Roll is not available with Fascia Shades.

Measuring Notes

• The workroom will deduct 1/4" from the width of the fascia for an inside mount (IM). The fabric will be 1-1/2" narrower than the fascia on an inside mount and 1-1/2" narrower on an outside mount (OM).

• The Fascia Shade may be ordered as Cloth Measure (CM). If ordered as CM the fascia will be 1-1/2" wider than the size ordered.

Inside Mount Light Gaps

The Fascia Roller Shade's gap is 3/4" on each side.

Multiple Shades on One Headrail

Two-on-Ones & Three-on-Ones are multiple shades mounted under one fascia.

- Provide the sizes of each individual shade AND the total width of the unit. The sizes of the individual shades must add up to the total width.
- The maximum total width for Two-on-Ones & Three-on-Ones is 168".
- The workroom will make allowances for inside mount and the spaces between shades (1-1/2").
- Price as separate shades.

Spring Roller

Fascia shades are only available with clutch controls. Spring roller and Easy Stop™ controls are not available

Contempo Scallops

Are available with Fascia Shades. See page C45 for more details.

Decorative Pulls

Are available with Fascia Shades. See page C45 for more details.

Motorization

Fascia Shade are only available with battery motorization, not plug-in (A/C). See page C51.

MOTORIZATION: page C51

PRICING: page C38

Horizons® Shades of Elegance™ Roman Shades

Shade Styles

Most of the same great patterns of the Shades of Elegance Collection are available in a Roman Shade. The shade hangs off the back of the headrail and raises in soft folds. When lowered completely, the material hangs flat. A 6" Classic Valance hangs off the front of the headrail concealing the shade's hardware. See the "Roman Shade" column in the index on page C36-C37 for a list of all fabrics available in Roman Shades.

Standard Specifications

- Fabric wrapped pine headrail (1-1/2" depth x 3/4" height)
- 6" Classic Valance
- Valance returns on outside mount shades are standard and are available upon request for inside mount shades.
- Cord Lock Controls

Size Limitations

Minimum Width:	8"
Maximum Width:	144"*
*or the max. fabric size from the index on page C36-C37 –whichever is less.	
Minimum Height:	12"
Maximum Height:	144"
Flush IM depth required:	2"
Minimum IM depth:	1/2"

Stacking Dimensions

Height	Stack	Height	Stack
To:	To:	To:	To:
36"	8"	84"	9"
48"	8-1/4"	96"	9-1/4"
60"	8-1/2"	120"	9-3/4"
72"	8-3/4"	144"	10-1/4"

Stacking heights are approximate.

Inside Mount Deductions

The workroom will deduct 1/2" from the width for an inside mount (IM).

Options

UPRIGHT CONTROLS See page B105
DUO-FOLD See page B106
WATERFALL STYLE See page D53
MULTIPLE SHADES ON ONE HEADRAIL See page B107
TURNED HEADRAIL See page B107
DECORATIVE TRIMMINGS See page B107
CONTEMPO SCALLOPS ON VALANCE See page C45
MOTORIZATION See page C51

Oversized Headrails

The standard headrail size is 3/4" tall by 1-1/2" depth or 3/4" tall by 2-1/2" depth with UpRight and some Cordless ONE Controls® shades. Larger depths of 3-1/2", 5-1/2" and 7-1/2" are also available for a surcharge.

Cordless ONE Controls®

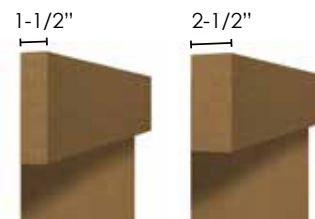
Horizons Cordless ONE Controls® are a patented (U.S. Patent #8,505,607 B2) lift system which completely eliminates pull cords.

cordless
ONE
controls®

HEADRAIL SIZE:

Cordless ONE Controls® shades up to 60" X 72" are made standard with a 1-1/2" headrail; over 60" x 72" will have a 2-1/2" headrail.

Orders that require shades with both Large and Small headrails will be made with both sizes, but you may specify all Large headrails.



- Specialty New York Brackets are standard with OM Cordless ONE Controls® shades and 2" screws are for standard IM.

- Cordless ONE Controls® add approximately 2-1/2" to the stacking dimension.

Minimum Width:	18"
Flush IM depth required:	3"
Minimum IM depth:	3/4"
Maximum Size:	96" x 108"

See them in action at www.horizonshades.com/cordless

Installation Methods

2" SCREWS are standard for all IM shades. They are simply screwed straight up through the headrail. 3" screws are available with IM turned headrail.

NEW YORK BRACKETS ("NY") are standard for all OM shades with valances except UpRight and Cordless Shades.

"L" BRACKETS are standard with all OM Waterfall and Duo-Fold shades.

SPECIALTY NEW YORK BRACKETS ("SNY") are standard for all OM Upright and Cordless ONE Controls® installations.

EXTENDED NEW YORK BRACKETS ("XNY") are another alternative OM installation bracket. They extend the shade 2" out from the wall.

FOOTLESS BRACKETS ("FB") are another alternative IM installation bracket.

MOTORIZATION page C51

PRICING page C39

Horizons® Twin Shade

United States Patent #8,261,808 B2

Twin Shade

The Twin Shade is a dual shade system with a beautiful roman shade on the front and a roller shade on the back that acts like a movable lining. The front roman shade can be from either the Natural Shade, Soft Treatments or Shades of Elegance collections. Choose the back roller shade from the Shades of Elegance roller shade collection

Standard Features

- The patented (#8,261,808 B2) dual headrail system.
- Classic Valance.
- Cord lock controls on the front Roman Shade
- Clutch controls on the back Roller Shade

Size Limitations

Minimum Width: 21"	IM depth required:	
Maximum Width: 96"	(shades up to 72" x 72")	3"
Minimum Height: 24"	(shades over to 72" x 72")	4"
Maximum Height: 96"	(shades with UpRight)	4"

Available Patterns

- The **front shade** may be ordered in any of the Horizons Natural Shade, Soft Treatments and most of the Shades of Elegance collections.
- The **back shade** may be ordered in any of the Shades of Elegance fabrics EXCEPT Siesta.

Valance and Returns

- Twin Shades with cord lock controls will have an 8" long classic valance.
- Twin Shades with UpRight Controls will have a 10" long valance.
- Outside Mount Twin Shades will have full length valance returns.
- Inside Mount Twin Shades are constructed without returns.

Stacking Dimensions

Height To:	Stack To:
36"	13"
48"	15"
60"	16"
72"	17"
84"	18"
96"	19"

Stacking heights are approximate.

Installation Brackets

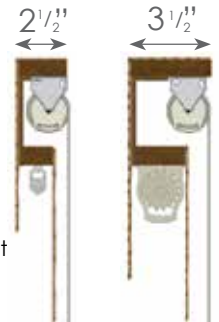
Extended New York ("XNY") Brackets are used for OM Twin Shades due to the larger headrail size, not to increase the shade's distance from the wall.

2" Screws are standard for IM Twin Shades. Footless Brackets are an alternative IM option.

Headrail Size

Twin Shades constructed with a 3-1/2" top headrail:

- All OM Twin Shades
- IM Twin Shades over 72" x 72"
- All Twin Shades with UpRight



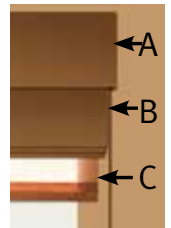
Twin Shades constructed with a 2-1/2" top headrail:

- IM Twin Shades under 72" x 72" that do not have an UpRight

Measuring Notes

For an OUTSIDE MOUNT:

- A. The headrail and valance will be approximately 1" wider on each side than the front shade.
- B. The front shade will be the exact width you order.
- C. The back shade will also be the exact width you order.



For an INSIDE MOUNT:

- A. The headrail and valance will only be 1/8" narrower than the exact width you order. Measure the inside width very precisely at the top of the window where the headrail will be mounted.
- B. The front shade will be 3/4" narrower than the headrail on the control side and 1/4" narrower on the opposite side.
- C. The back shade will be 3/4" narrower than the front shade on each side.

Options

Available options for the **front** shade:

- UpRight Controls
- Decorative Trimmings
- Duo-Fold

See pages C45 for more details about these options

Options NOT available on a Twin Shade: Waterfall Style, Hobbled Style, Sleek-Valance Returns, Mitered Headrails, Turned Headrails, Multiple Shades on One Headrail, Contempo Scallops, Spring Roller Controls, Decorative Pulls and Motorization.

PRICING: page C39 (front), C38 (back)



Élance Sliding Panels

Élance Sliding Panels

Élance Sliding Panels are a fashionable way to cover large windows and doors. See the "Élance" column in the index on page C36-C37 for a list of all fabrics available as Élance.

Standard Specifications

- Smooth gliding draw cord controls.
- 2" minimum panel overlap

Size Limitations

	One-Way Draw	Split Draw
Min. Width:	24"	48"
Max. Width:	192"	192"
Min. Height:	18"	18"
Max. Height:	144"	144"

FLUSH IM DEPTH REQUIREMENT:

	One-Way Draw	Split Draw
2 panel track	3-1/8"	n/a
3 panel track	3-3/8"	n/a
4 panel track	3-5/8"	3-1/8"
5 panel track	4-1/2"	n/a
6 panel track	n/a	3-3/8"

MIN. IM DEPTH REQUIREMENT:

	One-Way Draw	Split Draw
2 panel track	2-1/2"	n/a
3 panel track	2-1/2"	n/a
4 panel track	2-3/4"	2-1/2"
5 panel track	3"	n/a
6 panel track	n/a	2-1/2"

Number of Panels

Track Width	Track Width	# of
One-Way	Split-Draw	Panels
24"- 47"	-	2
48"- 84"	-	3
85"- 119"	48"- 114"	4
120"- 192"	-	5
-	115"- 192"	6

Custom panel widths and counts are available.

Installation Brackets

WALL BRACKETS:

Wall brackets are for OM Élance and are adjustable for use as an extension bracket.



CEILING BRACKETS:

Ceiling brackets are for all IM Élance.



C50

Stacking Dimensions

The stacking dimension is the width of the unit divided by the number of panels plus 2". For example, a 100" wide Élance with 4 panels will have a stack of 27" (100" wide ÷ 4 panels + 2").

Measuring Notes

Inside Mount:

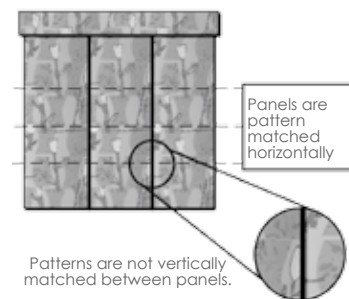
The workroom will deduct 1/4" from the width of the track and 1/2" from the total height of the unit for an Inside Mount. Important Note: The total fabric width will be 1-1/2" narrower than the width of the track. This will cause a 7/8" inch gap on each side of an Inside Mount Élance. If this much gapping is a concern, please consider an Outside Mount.

Outside Mount:

The track on an Outside Mount Élance will be 1-1/2" wider than the ordered width.

Pattern Orientation

The pattern in the panels and the valance run vertically.



Options

WAND CONTROLS

Wand controls are a no charge option on Élance, eliminating all accessible cords..

VALANCES AND TOP TREATMENTS

All valances and top treatments are surcharged options on Élance. Choose from the 6" Classic Valance (page C45), Premium Woven Top Treatments (pages D61-D65), Upholstered Cornices (pages B124-B127) or the fabric Premium Top Treatments (pages B128-B143).

- Order a separate valance or top treatment at least 2" wider than the Élance for clearance. A minimum 5-1/2" board/return size is also required.
- For an Élance, the 6" Classic Valance is attached to the front of the track with velcro. For Outside Mounts, valance returns are included at no extra charge. Inside Mount valances do not include valance returns unless requested.

PRICING: page C40

Horizons Motorized Shades

Roller Shades & Roman Shades

are available with either BATTERY powered motors or A/C (plug-in) powered motors.

Cassette & Fascia Roller Shades

are only available with BATTERY powered motors.

Standard Specification

- Reliable Somfy motor system
- Pre-programmed for easy installation
- Battery pack with replaceable lithium batteries.
- Motor located on the right side of the shade.
- 8" Classic Valance on Roman Shades

Size Limitations

	ROLLER/CASSETTE/FASCIA		ROMAN	
	Battery	A/C	Battery	A/C
Minimum Width:	15"	28"	15"	28"
Maximum Width:	84"*	168"*	84"*	144"*
Minimum Height:	24"	24"	24"	24"
Maximum Height:	96"*	144"*	84"*	144"*
Minimum IM depth:	1-1/2"	3-1/8"	2"	2"

*or the max. fabric size from the index on page C36-C37 –whichever is less.

Controls

- The remote controls for all motorized shades are radio frequency (not infrared) and are pre-programmed for your shades.
- One remote control can independently operate multiple shades in a single room.
- Hand-held and wall mounted remotes are available.

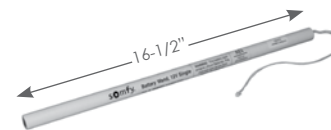


Ordering & Measuring Notes

- Record the measurements of multiple shades in one room in sequence – left to right – on the order form. The workroom will pre-program the remote control in that sequence.
- Specify the name of the room each shade will be in. This is required information for programming.
- To avoid possible interference A/C motors should be at least 19" apart.
- For Roman Shades only, due to the 3-1/2" headrail, Extended New York Brackets are required for OM installation, but do not increase the shade's distance from the wall. 2" Screws are standard for IM installation.

Battery Powered Notes

- Each shade includes a reloadable lithium battery pack with 8 "AA" batteries. The life of the battery pack is approximately 2 years under normal daily use.



A/C (Plug-In) Notes

- A/C shades come standard with a 6-foot long power cord that plugs into a standard wall outlet. Lengths of 12', 18' or 24' are also available. The shades may optionally be hard-wired to the wall by a professional electrician.
- To avoid possible interference, A/C motors should be at least 19" apart.
- The motor location is on the right side of the shade. Motor location on the left may be specified.

Roman Shade Stacking Space

Motorization adds approximately 4" to the shade's stacking dimension shown on page C48.

Installation Brackets

Battery Powered Units:

Universal Clutch Brackets are used for Motorized Roller Shades. They may be used for wall, ceiling, or inside mount. Extended brackets are also available.

Cassette Shade Brackets are used for Motorized Cassette Shades. They may be used for wall, ceiling or inside mount.

Fascia Shade Brackets are used for Motorized Fascia Shades. They may be used for wall, ceiling or inside mount.

A/C Powered Units:

Universal Brackets are the standard brackets for an A/C powered unit. They can be used for wall, ceiling or inside mount.



PRICING: Price shade from pages C38 or C39 plus motorization on page F1

Horizons®



February 2014