



HORIZONS™

STYLE THAT MAKES A STATEMENT

Natural Shades  
Options Guide



# Shade Styles



CLASSIC ROMAN



HOBBLER ROMAN



WATERFALL ROMAN



DUO-FOLD



TWIN SHADE/OPERABLE LINING

# Natural Drapes/Side Panels



AVERTÉ NATURAL FOLD  
(STANDARD FULLNESS)



AVERTÉ NATURAL FOLD  
(20% FULLNESS)



DECORATIVE POLE TRACK



GROMMET STYLE SIDE PANELS



RING CLIP PANELS



# Casual Woven Valances



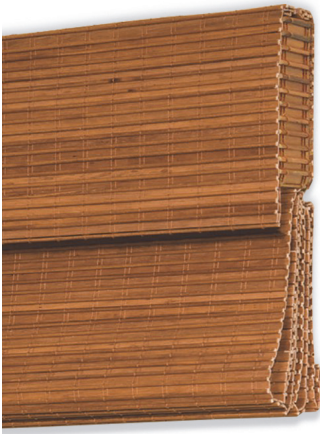
6" CLASSIC VALANCE



DOUBLE HOBLED VALANCE



TRIPLE HOBLED VALANCE



DELUXE RETURNS



TRADITIONAL RETURNS



SLEEK RETURNS

# Edge Accents (Shades & Valances)



STANDARD BANDING CONFIGURATION



SIDES & BOTTOM



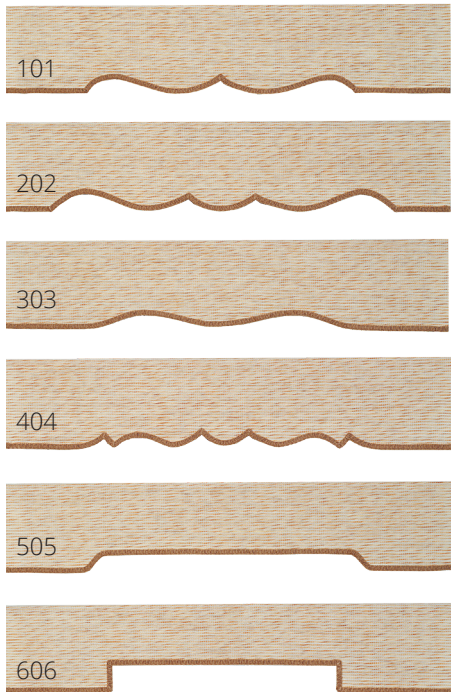
SIDES ONLY



BOTTOMS ONLY



INSET EDGE ACCENTS



CONTEMPO SCALLOPS



# Premium Top Treatments

Decorative trimmings and edge accents available from any material in the Horizons Soft Treatments collection or Customer's Own Material (C.O.M.)



SIMPLICITY



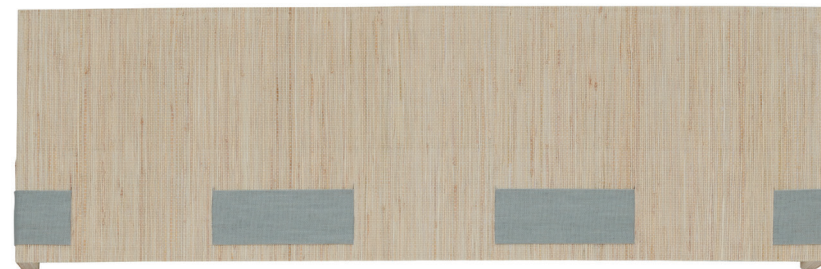
ESSENTIAL



DESIGNER



TRIPLE TIER



FABRIC SASH



LUXE LAYERED



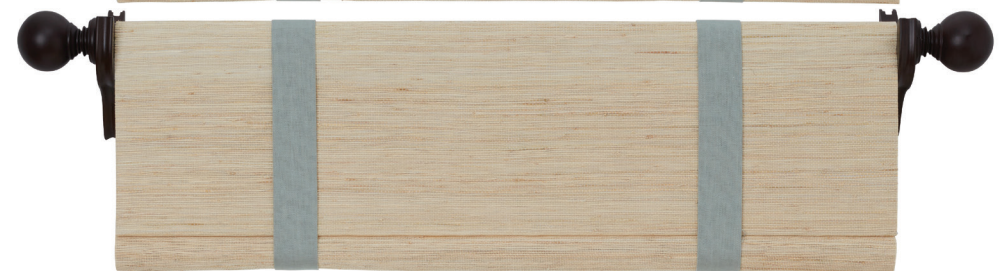
APEX



IMPERIAL



LIBERTY



TIMELESS





# Natural Woven Shades

## Photo Gallery

### INDEX

Natural Woven Shades	Page D2
Cordless ONE Controls	Page D5
Sample Book App	Page D6
Operable Lining	Page D7
Edge Accents Banding	Page D9
Averté Natural Fold	Page D10
Premium Woven Top Treatments	Page D14
Natural Woven Side Panels	Page D15
Pattern Showcase	Page D16
Fabric Coordination Suggestions	Page D34

Cañita Sand





D2





Northbrook Birch





Landscape Natural



Tranquility Timid White

D4

August 2018





cordless  
**ONE**  
controls™

Horizons Cordless ONE Controls® are a patented shade lift system which completely eliminates the pull cord.

See it in motion at  
[horizonshades.com/cordless](http://horizonshades.com/cordless)

*...it's what  
you don't see*





Rainforest Birch

See more beautiful room-setting photos on the Horizons App or in our online photo gallery. Visit [horizonshades.com](http://horizonshades.com) for details.





# Operable Lining

Blakely Slate  
(shown here with the Operable Lining raised)

The exclusive Operable Lining from Horizons offers the ultimate in flexibility and light control. Easily transition from the beautiful translucency of natural materials to your choice of either privacy or room darkening when needed.



Blakely Slate  
(shown here with the Operable Lining lowered)

D7

August 2018





Landscape Slate



Florence Snowfall White

D8

August 2018





Holland Mesh  
Berkshire



Shelter Birch

D9





Veranda Bleached

D10

August 2018



# Averté Natural Fold™



August 2018

D11



# Natural Woven Shades



Aislado Deluxe



Tranquility Gray

D12

August 2018





Forestglen Walnut



August 2018

Tranquility Pale Almond

D13



# Premium Woven Top Treatments



A1



A2



A3



A4



A5



A6



A7



A8



A9



A10

D14



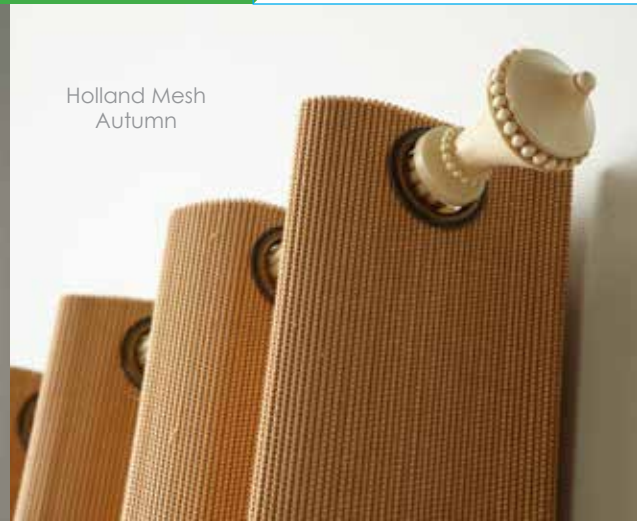
Rainforest Walnut

August 2018





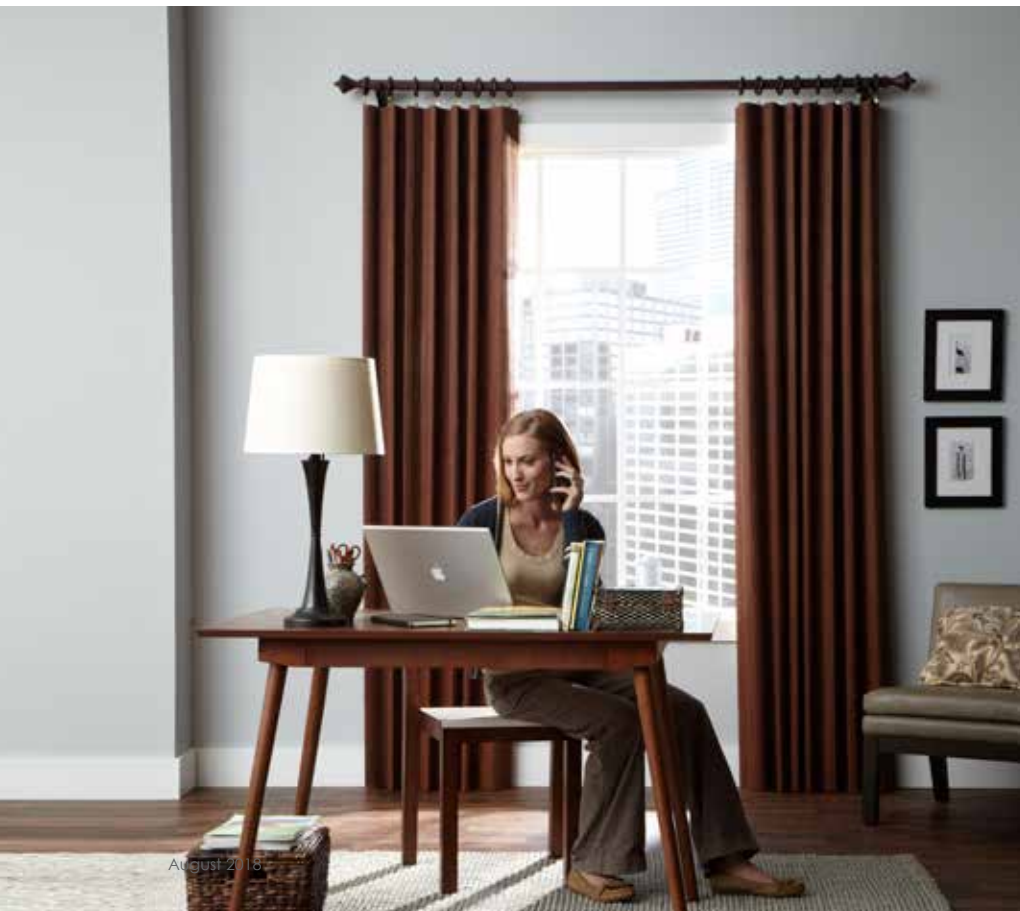
Holland Mesh  
Autumn



## Natural Woven Side Panels

Horizons Natural Woven Side Panels are a beautiful combination of today's two most desirable window fashion trends – side panels and natural woven materials.

Combined with Horizons Decorative Hardware, they are offered in two styles: Grommet Style Panels and Ring Clip Style Panels.



Camelot Walnut



D15

August 2, 15





VIEW DETAIL

**Blue**

2-1/4" Luster Bead Fringe •  
Decorative Trim



VIEW DETAIL

**Cream**

2-1/4" Luster Bead Fringe •  
Decorative Trim



VIEW DETAIL

**Gray**

2-1/4" Luster Bead Fringe •  
Decorative Trim



VIEW DETAIL

**Green**

2-1/4" Luster Bead Fringe •  
Decorative Trim



VIEW DETAIL

**Red**

2-1/4" Luster Bead Fringe •  
Decorative Trim



VIEW DETAIL

**Taupe**

2-1/4" Luster Bead Fringe •  
Decorative Trim



VIEW DETAIL

**Beige**

Bead & Tassel Fringe • Decorative  
Trim



VIEW DETAIL

**Pewter**

Bead & Tassel Fringe • Decorative  
Trim



VIEW DETAIL

**White**

Bead & Tassel Fringe • Decorative  
Trim



VIEW DETAIL

**Birch**

Berlin Decorative Tape •  
Decorative Trim



VIEW DETAIL

**Bluebell**

Berlin Decorative Tape •  
Decorative Trim



VIEW DETAIL

**Cloud**

Berlin Decorative Tape •  
Decorative Trim





VIEW DETAIL

**Navy**

Berlin Decorative Tape •  
Decorative Trim



VIEW DETAIL

**Platinum**

Berlin Decorative Tape •  
Decorative Trim



VIEW DETAIL

**Rattan**

Berlin Decorative Tape •  
Decorative Trim



VIEW DETAIL

**Cream**

Dahlia Tassel Fringe • Decorative  
Trim



VIEW DETAIL

**Flax**

Dahlia Tassel Fringe • Decorative  
Trim



VIEW DETAIL

**Pewter**

Dahlia Tassel Fringe • Decorative  
Trim



VIEW DETAIL

**Spa**

Dahlia Tassel Fringe • Decorative  
Trim



VIEW DETAIL

**Cream**

Delaney Bead Fringe • Decorative  
Trim



VIEW DETAIL

**Flax**

Delaney Bead Fringe • Decorative  
Trim



VIEW DETAIL

**Pewter**

Delaney Bead Fringe • Decorative  
Trim



VIEW DETAIL

**Spa**

Delaney Bead Fringe • Decorative  
Trim



VIEW DETAIL

**Beige**

Greek Key Decorative Tape •  
Decorative Trim





VIEW DETAIL

**Gold**

Greek Key Decorative Tape •  
Decorative Trim



VIEW DETAIL

**Spa**

Greek Key Decorative Tape •  
Decorative Trim



VIEW DETAIL

**Sterling**

Greek Key Decorative Tape •  
Decorative Trim



VIEW DETAIL

**White**

Greek Key Decorative Tape •  
Decorative Trim



VIEW DETAIL

**Aqua**

Lattice Decorative Tape •  
Decorative Trim



VIEW DETAIL

**Coral**

Lattice Decorative Tape •  
Decorative Trim



VIEW DETAIL

**Cream**

Lattice Decorative Tape •  
Decorative Trim



VIEW DETAIL

**Fog**

Lattice Decorative Tape •  
Decorative Trim



VIEW DETAIL

**Navy**

Lattice Decorative Tape •  
Decorative Trim



VIEW DETAIL

**Beige**

Sophia Bead Fringe • Decorative  
Trim



VIEW DETAIL

**Pewter**

Sophia Bead Fringe • Decorative  
Trim



VIEW DETAIL

**White**

Sophia Bead Fringe • Decorative  
Trim





VIEW DETAIL

**Alabaster**

Standard Gimp • Decorative Trim



VIEW DETAIL

**Black**

Standard Gimp • Decorative Trim



VIEW DETAIL

**Camel**

Standard Gimp • Decorative Trim



VIEW DETAIL

**Gray**

Standard Gimp • Decorative Trim



VIEW DETAIL

**Mocha**

Standard Gimp • Decorative Trim



VIEW DETAIL

**Navy**

Standard Gimp • Decorative Trim



VIEW DETAIL

**Shell**

Standard Gimp • Decorative Trim



VIEW DETAIL

**White**

Standard Gimp • Decorative Trim



VIEW DETAIL

**Dark Brown**

Twill Tapes • Decorative Trim



VIEW DETAIL

**Ebony**

Twill Tapes • Decorative Trim



VIEW DETAIL

**Natural**

Twill Tapes • Decorative Trim



VIEW DETAIL

**Navy**

Twill Tapes • Decorative Trim





VIEW DETAIL

**Stone**

Twill Tapes • Decorative Trim



VIEW DETAIL

**Tan**

Twill Tapes • Decorative Trim



VIEW DETAIL

**White**

Twill Tapes • Decorative Trim



Pattern Name	Price Group	Max-Size Upright 2.0 (Sq. Ft.)	Max-Size Hobbled Roman Upright 2.0 (Sq. Ft.)	Fabric Weight - See the Cordless ONE Controls headrail charts	Fabric Opacity (1 - Sheer, 2 - Semi-Sheer, 3 - Semi-Opaque to Opaque)	Fabric Content	Grommet Woven Side Panels	Available in Averte
Anthem	4	100	66	Medium	2	Bamboo Reed, Carved Bamboo Slat, Paper	•	•
Avery	5	100	66	Light	2	Ramie, Poly Yarn	•	No
Belden	3	100	66	Medium	2	Bamboo Reed	•	•
Blakely	4	100	66	Light	2	Jute	•	•
Brookfield	4	100	66	Medium	3	Jute, Yarn	•	•
Brynn	6	100	66	Light	2	Paper	•	No
Cameo	3	100	66	Medium	3	Araucaria	•	•
Capri	2	100	66	Medium	3	Araucaria	•	•
Colette	4	100	66	Light	2	Ramie, Bamboo, Threading Yarn	•	•
Danube	3	100	66	Medium	3	Jute, Seagrass, Bamboo	•	•
Darcy	6	100	66	Light	2	Ramie, Threading Yarn	•	No
Deerfield	3	100	66	Medium	3	Jute, Bamboo	•	•
Delaney	5	100	66	Light	2	Bamboo, Jute	•	•
Exquisite Malibu	4	70	46	Heavy	3	Bamboo	•	•
Florence	2	100	66	Medium	1	Bamboo	•	•
Forestglen	5	100	66	Medium	2	Jute, Bamboo	•	•
Francisco	3	100	66	Medium	2	Jute, Seagrass	•	•
Gianna	5	100	66	Medium	2	Ramie, Bamboo, Metal String, Threading Yarn	•	•
Glendale	5	100	66	Medium	3	Jute, Seagrass	•	•
Harlan	5	100	66	Light	2	Paper Yarn, Bamboo Stick	•	•
Harmony	4	100	66	Medium	3	Jute, Bamboo	•	•
Hawthorn	6	100	66	Medium	2	Bamboo Meat, Bamboo Reed, Paper, Jute Thread	•	•
Highland	3	100	66	Medium	1	Bamboo Slat, Bamboo Stick	•	•
Holland Mesh	3	80	53	Heavy	3	Araucaria	•	•



Jasper	5	100	66	Medium	2	Bamboo Reed, Paper Rope, Jute	•	•
Lacquer'd Imperial Shell	3	70	46	Heavy	3	Bamboo	•	•
Lakeview	3	100	66	Medium	3	Paper Yarn, Threading Yarn	•	•
Landscape	4	100	66	Light	2	Jute	•	•
Linden	6	100	66	Light	2	Ramie, Jute	•	No
Madeira	4	100	66	Medium	2	Bamboo, Jute	•	•
Melbourne	1	100	66	Medium	1	Bamboo, Threading Yarn	•	•
Monterey	5	100	66	Light	2	Jute	•	•
Northbrook	4	100	66	Medium	2	Jute, Bamboo	•	•
Ophelia	5	70	53	Heavy	3	Wood, Threading Yarn	•	•
Rainforest	5	100	66	Medium	3	Jute	•	•
Richton	6	100	66	Light	2	Assorted Jute, Bamboo, Threading Yarn	•	No
Riverwoods	6	100	66	Medium	2	Jute, Bamboo	•	•
Sandrine	3	100	66	Medium	3	Oval Bamboo Mat, Bamboo Reed, Paper Rope	•	•
Solitaire	3	100	66	Medium	2	Bamboo	•	•
Sutton	4	100	66	Light	2	Bamboo Reed, Paper, Jute	•	•
Tenley	6	100	66	Light	1	Jute, Yarn	•	No
Tranquility	4	100	66	Medium	3	Grass, Bamboo	•	•
Valdis	3	100	66	Medium	3	Bamboo Reed	•	•
Vierra	5	100	66	Light	2	Paper Yarn, Bamboo Stick	•	•
Vintage Malibu	3	70	46	Heavy	3	Bamboo	•	•
Waveland	2	100	66	Light	1	Bamboo	•	•
Wheatfield	3	100	66	Medium	2	Jute, Seagrass	•	•
Willowbrook	5	100	66	Medium	3	Jute	•	•

• = Yes, this product is available in this pattern





**Barley**  
Anthem • Semi-Sheer

Pattern: **Anthem Barley**  
Price Group: 4

✓ Order a sample?  
(FREE!)

**Camel**  
Anthem • Semi-Sheer

Pattern: **Anthem Camel**  
Price Group: 4

✓ Order a sample?  
(FREE!)

**Harvest Wheat**  
Anthem • Semi-Sheer

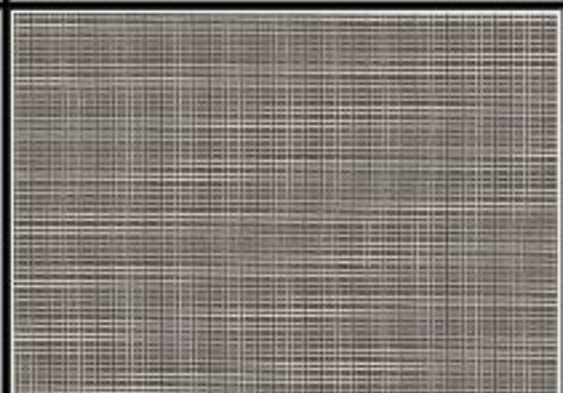
Pattern: **Anthem Harvest Wheat**  
Price Group: 4

✓ Order a sample?  
(FREE!)

**Coastal Fog**  
Avery • Semi-Sheer

Pattern: **Avery Coastal Fog**  
Price Group: 5

✓ Order a sample?  
(FREE!)



**Gingerbread**  
Avery • Semi-Sheer

Pattern: **Avery Gingerbread**  
Price Group: 5

✓ Order a sample?  
(FREE!)

**Natural Linen**  
Avery • Semi-Sheer

Pattern: **Avery Natural Linen**  
Price Group: 5

✓ Order a sample?  
(FREE!)

**Fresh Bagel**  
Belden • Semi-Sheer

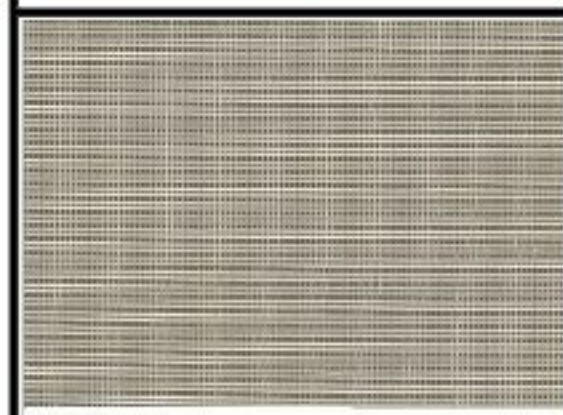
Pattern: **Belden Fresh Bagel**  
Price Group: 3

✓ Order a sample?  
(FREE!)

**Henna**  
Belden • Semi-Sheer

Pattern: **Belden Henna**  
Price Group: 3

✓ Order a sample?  
(FREE!)



**Quarry**  
Belden • Semi-Sheer

Pattern: **Belden Quarry**  
Price Group: 3

✓ Order a sample?  
(FREE!)

**Granite**  
Blakely • Semi-Sheer

Pattern: **Blakely Granite**  
Price Group: 4

✓ Order a sample?  
(FREE!)

**Pale Almond**  
Blakely • Semi-Sheer

Pattern: **Blakely Pale Almond**  
Price Group: 4

✓ Order a sample?  
(FREE!)

**Slate**  
Blakely • Semi-Sheer

Pattern: **Blakely Slate**  
Price Group: 4

✓ Order a sample?  
(FREE!)





## Spiced Brown

Blakely • Semi-Sheer

Pattern: **Blakely Spiced Brown**  
Price Group: 4

✓ Order a sample?  
(FREE!)



## White

Brookfield • Semi-Opaque to Opaque

Pattern: **Brookfield White**  
Price Group: 4

✓ Order a sample?  
(FREE!)

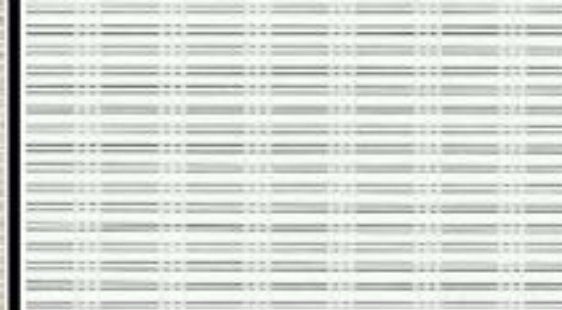


## Clean Canvas

Brynn • Semi-Sheer

Pattern: **Brynn Clean Canvas**  
Price Group: 6

✓ Order a sample?  
(FREE!)



## White

Cameo • Semi-Opaque to Opaque

Pattern: **Cameo White**  
Price Group: 3

✓ Order a sample?  
(FREE!)



## Light Walnut

Capri • Semi-Opaque to Opaque

Pattern: **Capri Light Walnut**  
Price Group: 2

✓ Order a sample?  
(FREE!)



## Soft White

Capri • Semi-Opaque to Opaque

Pattern: **Capri Soft White**  
Price Group: 2

✓ Order a sample?  
(FREE!)



## White

Capri • Semi-Opaque to Opaque

Pattern: **Capri White**  
Price Group: 2

✓ Order a sample?  
(FREE!)



## Deep Coal

Colette • Semi-Sheer

Pattern: **Colette Deep Coal**  
Price Group: 4

✓ Order a sample?  
(FREE!)



## Glacial Tint

Colette • Semi-Sheer

Pattern: **Colette Glacial Tint**  
Price Group: 4

✓ Order a sample?  
(FREE!)



## Smoky Taupe

Colette • Semi-Sheer

Pattern: **Colette Smoky Taupe**  
Price Group: 4

✓ Order a sample?  
(FREE!)



## Birch

Danube • Semi-Opaque to Opaque

Pattern: **Danube Birch**  
Price Group: 3

✓ Order a sample?  
(FREE!)



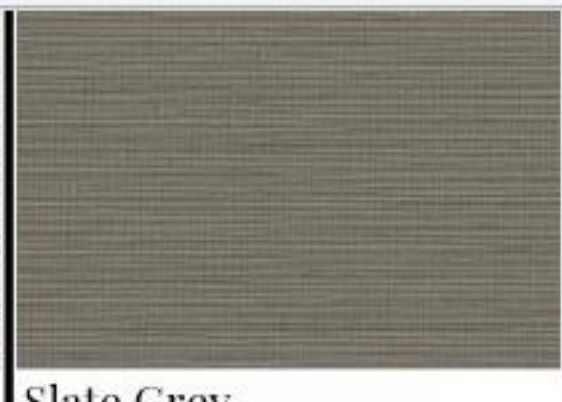
## Wheat

Danube • Semi-Opaque to Opaque

Pattern: **Danube Wheat**  
Price Group:

✓ Order a sample?  
(FREE!)





**Autumn Grass**  
 Darcy • Semi-Sheer  
 Pattern: **Darcy Autumn Grass**  
 Price Group: 6  
 ✓ Order a sample?  
 (FREE!)

**Exotic Ecrú**  
 Darcy • Semi-Sheer  
 Pattern: **Darcy Exotic Ecrú**  
 Price Group: 6  
 ✓ Order a sample?  
 (FREE!)

**Pale Almond**  
 Deerfield • Semi-Opaque to Opaque  
 Pattern: **Deerfield Pale Almond**  
 Price Group: 3  
 ✓ Order a sample?  
 (FREE!)

**Slate Grey**  
 Deerfield • Semi-Opaque to Opaque  
 Pattern: **Deerfield Slate Grey**  
 Price Group: 3  
 ✓ Order a sample?  
 (FREE!)

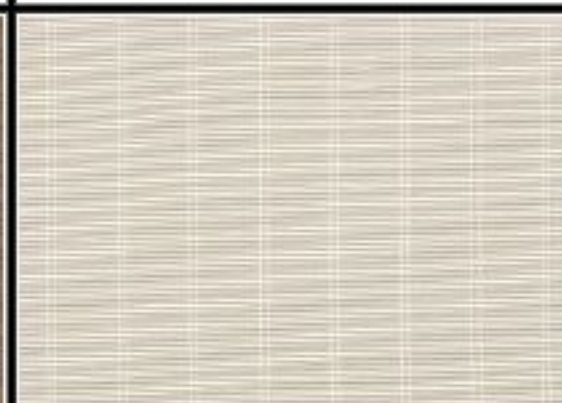


**White**  
 Deerfield • Semi-Opaque to Opaque  
 Pattern: **Deerfield White**  
 Price Group: 3  
 ✓ Order a sample?  
 (FREE!)

**Denim Dream**  
 Delany • Semi-Sheer  
 Pattern: **Delany Denim Dream**  
 Price Group: 5  
 ✓ Order a sample?  
 (FREE!)

**Glistening Seashore**  
 Delany • Semi-Sheer  
 Pattern: **Delany Glistening Seashore**  
 Price Group: 5  
 ✓ Order a sample?  
 (FREE!)

**Mercury Haze**  
 Delany • Semi-Sheer  
 Pattern: **Delany Mercury Haze**  
 Price Group: 5  
 ✓ Order a sample?  
 (FREE!)



**Subdued Steel**  
 Delany • Semi-Sheer  
 Pattern: **Delany Subdued Steel**  
 Price Group: 5  
 ✓ Order a sample?  
 (FREE!)

**Snowfall White**  
 Florence • Sheer  
 Pattern: **Florence Snowfall White**  
 Price Group: 2  
 ✓ Order a sample?  
 (FREE!)

**Pecan**  
 Forestglen • Semi-Sheer  
 Pattern: **Forestglen Pecan**  
 Price Group: 5  
 ✓ Order a sample?  
 (FREE!)

**Basil**  
 Francisco • Semi-Sheer  
 Pattern: **Francisco Basil**  
 Price Group: 3  
 ✓ Order a sample?  
 (FREE!)



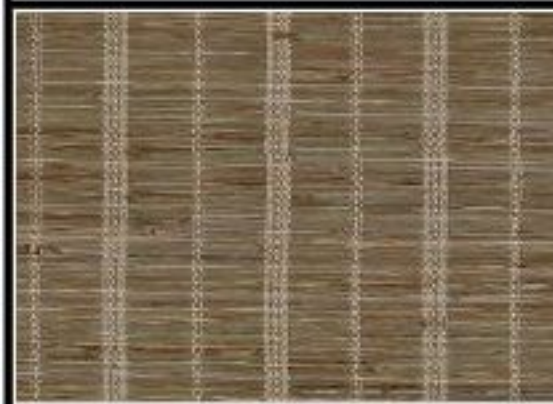


**Wheat**  
 Francisco • Semi-Sheer  
 Pattern: **Francisco Wheat**  
 Price Group: 3  
 ✓ Order a sample?  
 (FREE!)

**Bronze Twinkle**  
 Gianna • Semi-Sheer  
 Pattern: **Gianna Bronze Twinkle**  
 Price Group: 5  
 ✓ Order a sample?  
 (FREE!)

**Coconut Shimmer**  
 Gianna • Semi-Sheer  
 Pattern: **Gianna Coconut Shimmer**  
 Price Group: 5  
 ✓ Order a sample?  
 (FREE!)

**Moon Mist**  
 Gianna • Semi-Sheer  
 Pattern: **Gianna Moon Mist**  
 Price Group: 5  
 ✓ Order a sample?  
 (FREE!)



**Sienna Sparkle**  
 Gianna • Semi-Sheer  
 Pattern: **Gianna Sienna Sparkle**  
 Price Group: 5  
 ✓ Order a sample?  
 (FREE!)

**Gray**  
 Glendale • Semi-Opaque to Opaque  
 Pattern: **Glendale Gray**  
 Price Group: 5  
 ✓ Order a sample?  
 (FREE!)

**Stone**  
 Glendale • Semi-Opaque to Opaque  
 Pattern: **Glendale Stone**  
 Price Group: 5  
 ✓ Order a sample?  
 (FREE!)

**Beachy Blue**  
 Harlan • Semi-Sheer  
 Pattern: **Harlan Beachy Blue**  
 Price Group: 5  
 ✓ Order a sample?  
 (FREE!)



**Debonair**  
 Harlan • Semi-Sheer  
 Pattern: **Harlan Debonair**  
 Price Group: 5  
 ✓ Order a sample?  
 (FREE!)

**French Pastry**  
 Harlan • Semi-Sheer  
 Pattern: **Harlan French Pastry**  
 Price Group: 5  
 ✓ Order a sample?  
 (FREE!)

**Summer Field**  
 Harlan • Semi-Sheer  
 Pattern: **Harlan Summer Field**  
 Price Group: 5  
 ✓ Order a sample?  
 (FREE!)

**Surreal Sky**  
 Harlan • Semi-Sheer  
 Pattern: **Harlan Surreal Sky**  
 Price Group: 5  
 ✓ Order a sample?  
 (FREE!)





**Natural**  
 Harmony • Semi-Opaque to Opaque  
 Pattern: **Harmony Natural**  
 Price Group: 4  
 ✓ Order a sample? (FREE!)



**Birch**  
 Hawthorn • Semi-Sheer  
 Pattern: **Hawthorn Birch**  
 Price Group: 6  
 ✓ Order a sample? (FREE!)



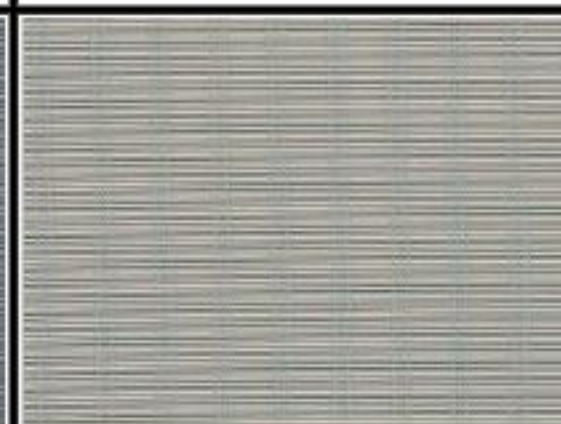
**Gray**  
 Hawthorn • Semi-Sheer  
 Pattern: **Hawthorn Gray**  
 Price Group: 6  
 ✓ Order a sample? (FREE!)



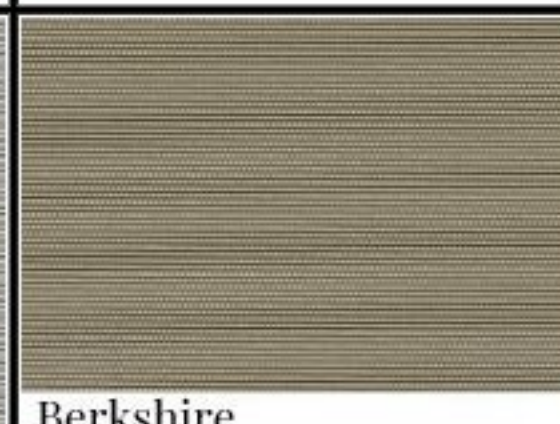
**Beige Whisper**  
 Highland • Sheer  
 Pattern: **Highland Beige Whisper**  
 Price Group: 3  
 ✓ Order a sample? (FREE!)



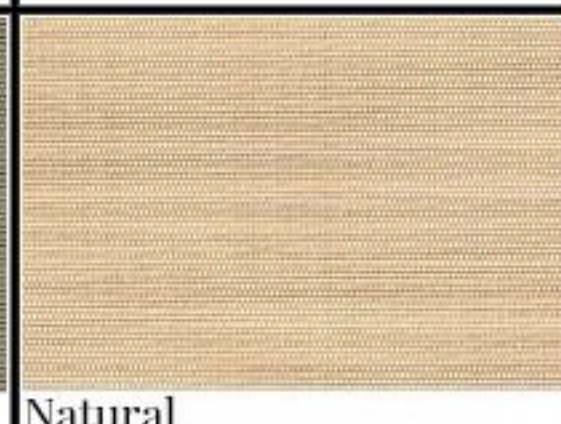
**Deep Atlantic**  
 Highland • Sheer  
 Pattern: **Highland Deep Atlantic**  
 Price Group: 3  
 ✓ Order a sample? (FREE!)



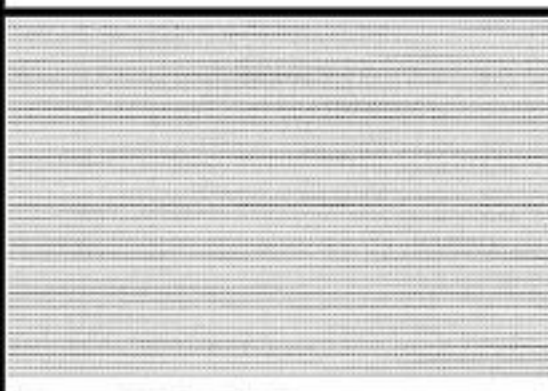
**Touch of Teal**  
 Highland • Sheer  
 Pattern: **Highland Touch of Teal**  
 Price Group: 3  
 ✓ Order a sample? (FREE!)



**Berkshire**  
 Holland Mesh • Semi-Opaque to Opaque  
 Pattern: **Holland Mesh Berkshire**  
 Price Group: 3  
 ✓ Order a sample? (FREE!)



**Natural**  
 Holland Mesh • Semi-Opaque to Opaque  
 Pattern: **Holland Mesh Natural**  
 Price Group: 3  
 ✓ Order a sample? (FREE!)



**Snowfall white**  
 Holland Mesh • Semi-Opaque to Opaque  
 Pattern: **Holland Mesh Snowfall White**  
 Price Group: 3  
 ✓ Order a sample? (FREE!)



**White**  
 Holland Mesh • Semi-Opaque to Opaque  
 Pattern: **Holland Mesh White**  
 Price Group: 3  
 ✓ Order a sample? (FREE!)

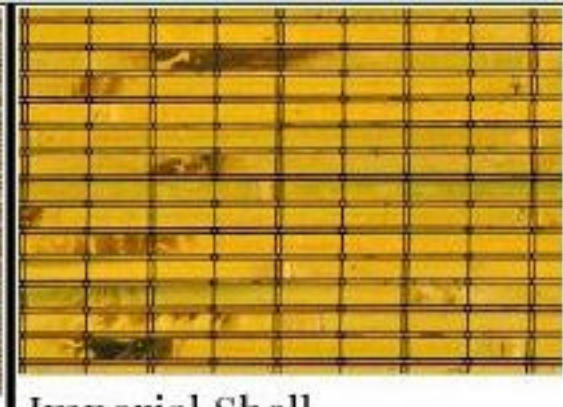


**Kaluha Cream**  
 Jasper • Semi-Sheer  
 Pattern: **Jasper Kaluha Cream**  
 Price Group: 5  
 ✓ Order a sample? (FREE!)



**Mexican Chocolate**  
 Jasper • Semi-Sheer  
 Pattern: **Jasper Mexican Chocolate**  
 Price Group: 5  
 ✓ Order a sample? (FREE!)





**Rustic Blue**  
 Jasper • Semi-Sheer  
 Pattern: **Jasper Rustic Blue**  
 Price Group: 5  
 ✓ Order a sample?  
 (FREE!)

**Sandy Brown**  
 Jasper • Semi-Sheer  
 Pattern: **Jasper Sandy Brown**  
 Price Group: 5  
 ✓ Order a sample?  
 (FREE!)

**Imperial Shell**  
 Lacquer'd • Semi-Opaque to Opaque  
 Pattern: **Lacquer'd Imperial Shell**  
 Price Group: 3  
 ✓ Order a sample?  
 (FREE!)

**Timid White**  
 Lakeview • Semi-Opaque to Opaque  
 Pattern: **Lakeview Timid White**  
 Price Group: 3  
 ✓ Order a sample?  
 (FREE!)



**Birch**  
 Landscape • Semi-Sheer  
 Pattern: **Landscape Birch**  
 Price Group: 4  
 ✓ Order a sample?  
 (FREE!)

**Natural**  
 Landscape • Semi-Sheer  
 Pattern: **Landscape Natural**  
 Price Group: 4  
 ✓ Order a sample?  
 (FREE!)

**Slate**  
 Landscape • Semi-Sheer  
 Pattern: **Landscape Slate**  
 Price Group: 4  
 ✓ Order a sample?  
 (FREE!)

**Taupe**  
 Landscape • Semi-Sheer  
 Pattern: **Landscape Taupe**  
 Price Group: 4  
 ✓ Order a sample?  
 (FREE!)



**Meringue**  
 Linden • Semi-Sheer  
 Pattern: **Linden Meringue**  
 Price Group: 6  
 ✓ Order a sample?  
 (FREE!)

**Neutral Intrigue**  
 Linden • Semi-Sheer  
 Pattern: **Linden Neutral Intrigue**  
 Price Group: 6  
 ✓ Order a sample?  
 (FREE!)

**Pale Bronze**  
 Linden • Semi-Sheer  
 Pattern: **Linden Pale Bronze**  
 Price Group: 6  
 ✓ Order a sample?  
 (FREE!)

**Sandcastle**  
 Linden • Semi-Sheer  
 Pattern: **Linden Sandcastle**  
 Price Group: 6  
 ✓ Order a sample?  
 (FREE!)





**Birch**  
 Madeira • Semi-Sheer  
 Pattern: **Madeira Birch**  
 Price Group: 4  
 ✓ Order a sample?  
 (FREE!)



**Ocean**  
 Madeira • Semi-Sheer  
 Pattern: **Madeira Ocean**  
 Price Group: 4  
 ✓ Order a sample?  
 (FREE!)



**Exquisite**  
 Malibu • Semi-Opaque to  
 Opaque  
 Pattern: **Malibu Exquisite**  
 Price Group:  
 ✓ Order a sample?  
 (FREE!)



**Vintage**  
 Malibu • Semi-Opaque to  
 Opaque  
 Pattern: **Malibu Vintage**  
 Price Group:  
 ✓ Order a sample?  
 (FREE!)



**Belgian Cream**  
 Melbourne • Sheer  
 Pattern: **Melbourne Belgian Cream**  
 Price Group: 1  
 ✓ Order a sample?  
 (FREE!)



**White**  
 Melbourne • Sheer  
 Pattern: **Melbourne White**  
 Price Group: 1  
 ✓ Order a sample?  
 (FREE!)



**Birch**  
 Monterey • Semi-Sheer  
 Pattern: **Monterey Birch**  
 Price Group: 5  
 ✓ Order a sample?  
 (FREE!)



**Taupe**  
 Monterey • Semi-Sheer  
 Pattern: **Monterey Taupe**  
 Price Group: 5  
 ✓ Order a sample?  
 (FREE!)



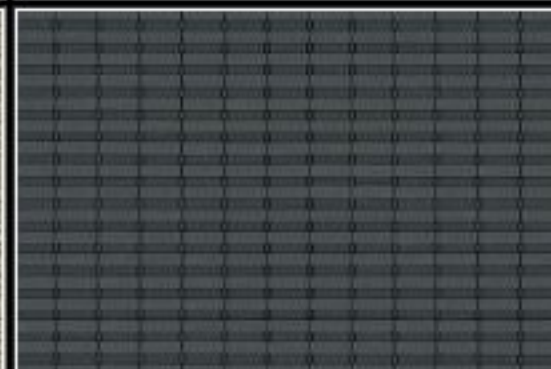
**Birch**  
 Northbrook • Semi-Sheer  
 Pattern: **Northbrook Birch**  
 Price Group: 4  
 ✓ Order a sample?  
 (FREE!)



**All Natural**  
 Ophelia • Semi-Opaque to  
 Opaque  
 Pattern: **Ophelia All Natural**  
 Price Group: 5  
 ✓ Order a sample?  
 (FREE!)



**Distressed Beige**  
 Ophelia • Semi-Opaque to  
 Opaque  
 Pattern: **Ophelia Distressed Beige**  
 Price Group: 5  
 ✓ Order a sample?  
 (FREE!)



**Navy Salute**  
 Ophelia • Semi-Opaque to  
 Opaque  
 Pattern: **Ophelia Navy Salute**  
 Price Group: 5  
 ✓ Order a sample?  
 (FREE!)





**Birch**  
 Rainforest • Semi-Opaque to Opaque  
 Pattern: **Rainforest Birch**  
 Price Group: 5  
 ✓ Order a sample? (FREE!)

**Wheat**  
 Rainforest • Semi-Opaque to Opaque  
 Pattern: **Rainforest Wheat**  
 Price Group: 5  
 ✓ Order a sample? (FREE!)

**Pale Almond**  
 Richton • Semi-Sheer  
 Pattern: **Richton Pale Almond**  
 Price Group: 6  
 ✓ Order a sample? (FREE!)

**Stone**  
 Richton • Semi-Sheer  
 Pattern: **Richton Stone**  
 Price Group: 6  
 ✓ Order a sample? (FREE!)



**Taupe**  
 Richton • Semi-Sheer  
 Pattern: **Richton Taupe**  
 Price Group: 6  
 ✓ Order a sample? (FREE!)

**Gray**  
 Riverwoods • Semi-Sheer  
 Pattern: **Riverwoods Gray**  
 Price Group: 6  
 ✓ Order a sample? (FREE!)

**Country Cabin**  
 Sandrine • Semi-Opaque to Opaque  
 Pattern: **Sandrine Country Cabin**  
 Price Group: 3  
 ✓ Order a sample? (FREE!)

**Creek Blue**  
 Sandrine • Semi-Opaque to Opaque  
 Pattern: **Sandrine Creek Blue**  
 Price Group: 3  
 ✓ Order a sample? (FREE!)



**Ivory Influence**  
 Sandrine • Semi-Opaque to Opaque  
 Pattern: **Sandrine Ivory Influence**  
 Price Group: 3  
 ✓ Order a sample? (FREE!)

**Skylark**  
 Sandrine • Semi-Opaque to Opaque  
 Pattern: **Sandrine Skylark**  
 Price Group: 3  
 ✓ Order a sample? (FREE!)

**White**  
 Solitaire • Semi-Sheer  
 Pattern: **Solitaire White**  
 Price Group: 3  
 ✓ Order a sample? (FREE!)

**Ashen Brown**  
 Sutton • Semi-Sheer  
 Pattern: **Sutton Ashen Brown**  
 Price Group: 4  
 ✓ Order a sample? (FREE!)





**Sundrenched Vanilla**  
 Sutton • Semi-Sheer  
 Pattern: **Sutton Sundrenched Vanilla**  
 Price Group: 4  
 ✓ Order a sample?  
 (FREE!)

**Tawny**  
 Sutton • Semi-Sheer  
 Pattern: **Sutton Tawny**  
 Price Group: 4  
 ✓ Order a sample?  
 (FREE!)

**Chiffon** LIMITED SUPPLY!  
 Tenley • Sheer  
 Pattern: **Tenley Chiffon**  
 Price Group: 6  
 ✓ Order a sample?  
 (FREE!)

**Cocoa** LIMITED SUPPLY!  
 Tenley • Sheer  
 Pattern: **Tenley Cocoa**  
 Price Group: 6  
 ✓ Order a sample?  
 (FREE!)

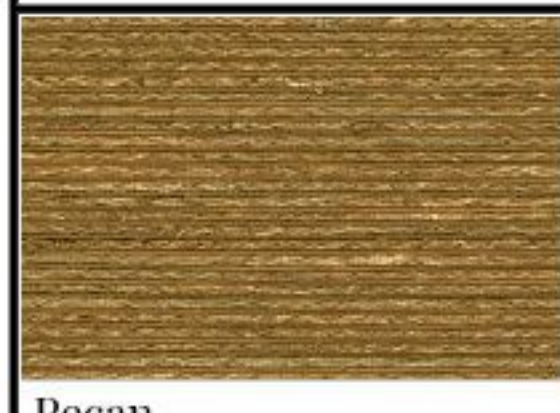


**Taupe Perfection**  
 Tenley • Sheer DISCONTINUED!  
 Pattern: **Tenley Taupe Perfection**  
 Price Group: 6  
 ✓ ~~Order a sample?~~  
 (FREE!)

**Grey**  
 Tranquility • Semi-Opaque to Opaque  
 Pattern: **Tranquility Grey**  
 Price Group: 4  
 ✓ Order a sample?  
 (FREE!)

**Natural**  
 Tranquility • Semi-Opaque to Opaque  
 Pattern: **Tranquility Natural**  
 Price Group: 4  
 ✓ Order a sample?  
 (FREE!)

**Pale Almond**  
 Tranquility • Semi-Opaque to Opaque  
 Pattern: **Tranquility Pale Almond**  
 Price Group: 4  
 ✓ Order a sample?  
 (FREE!)



**Pecan**  
 Tranquility • Semi-Opaque to Opaque  
 Pattern: **Tranquility Pecan**  
 Price Group: 4  
 ✓ Order a sample?  
 (FREE!)

**Timid White**  
 Tranquility • Semi-Opaque to Opaque  
 Pattern: **Tranquility Timid White**  
 Price Group: 4  
 ✓ Order a sample?  
 (FREE!)

**Walnut**  
 Tranquility • Semi-Opaque to Opaque  
 Pattern: **Tranquility Walnut**  
 Price Group: 4  
 ✓ Order a sample?  
 (FREE!)

**Biscotti**  
 Valdis • Semi-Opaque to Opaque  
 Pattern: **Valdis Biscotti**  
 Price Group: 3  
 ✓ Order a sample?  
 (FREE!)





### Elusive Gray

Valdis • Semi-Opaque to Opaque

Pattern: **Valdis Elusive Gray**  
Price Group: 3

✓ Order a sample?  
(FREE!)



### Warm Walnut

Valdis • Semi-Opaque to Opaque

Pattern: **Valdis Warm Walnut**  
Price Group: 3

✓ Order a sample?  
(FREE!)



### Delicate Eggshell

Vierra • Semi-Sheer

Pattern: **Vierra Delicate Eggshell**  
Price Group: 5

✓ Order a sample?  
(FREE!)

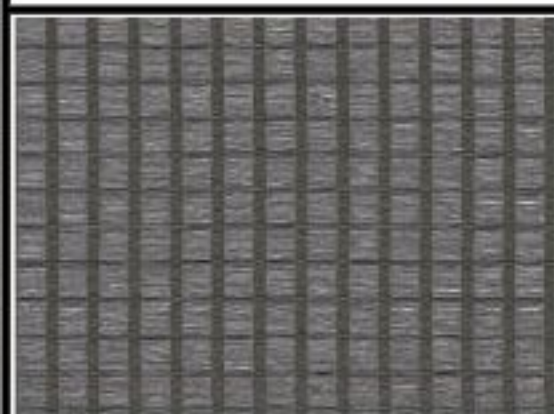


### Faded Fatigue

Vierra • Semi-Sheer

Pattern: **Vierra Faded Fatigue**  
Price Group: 5

✓ Order a sample?  
(FREE!)

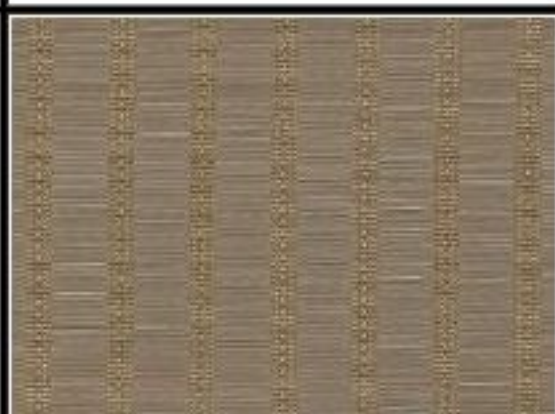


### Nightfall

Vierra • Semi-Sheer

Pattern: **Vierra Nightfall**  
Price Group: 5

✓ Order a sample?  
(FREE!)



### Graystone

Waveland • Sheer

Pattern: **Waveland Graystone**  
Price Group: 2

✓ Order a sample?  
(FREE!)

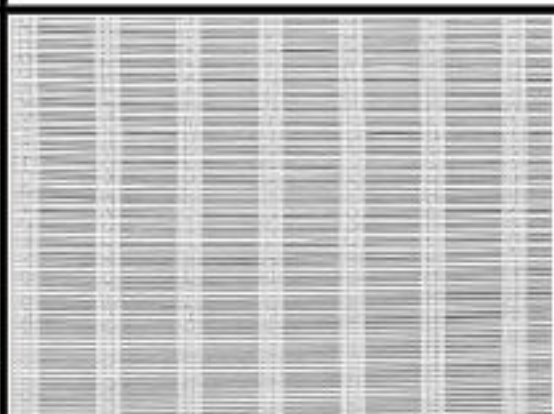


### Savvy Slate

Waveland • Sheer

Pattern: **Waveland Savvy Slate**  
Price Group: 2

✓ Order a sample?  
(FREE!)



### White

Waveland • Sheer

Pattern: **Waveland White**  
Price Group: 2

✓ Order a sample?  
(FREE!)

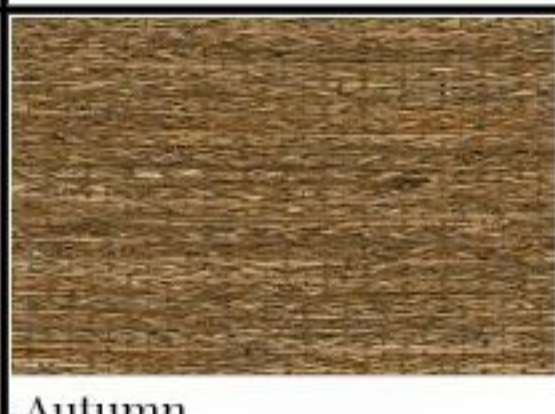


### Gray

Wheatfield • Semi-Sheer

Pattern: **Wheatfield Gray**  
Price Group: 3

✓ Order a sample?  
(FREE!)



### Autumn

Willowbrook • Semi-Opaque to Opaque

Pattern: **Willowbrook Autumn**  
Price Group: 5

✓ Order a sample?  
(FREE!)



### Gray

Willowbrook • Semi-Opaque to Opaque

Pattern: **Willowbrook Gray**  
Price Group: 5

✓ Order a sample?  
(FREE!)



### Wheat

Willowbrook • Semi-Opaque to Opaque

Pattern: **Willowbrook Wheat**  
Price Group: 5

✓ Order a sample?  
(FREE!)



Horizons®

# Natural Woven Shades

## Product Information

### INDEX

Natural Woven Shades	Page D52
Cordless ONE Controls®	Page D54
Twin Shade	Page D57
Averté Natural Fold	Page D58
Natural Woven Side Panels	Page D59
Valance Options	Page D60
Specialty Shaped Shades	Page D66
Motorized Shades and Averté	Page D68



# Horizons® Natural Woven Shades

## Shade Styles

### CLASSIC ROMAN SHADE:

Simple and elegant, the Classic Roman Shade lies flat when lowered.

### HOBBLED ROMAN SHADE:

This shade keeps its elegant Roman folds when lowered.

## Standard Shade Features

- Premium stained or painted wood headrail (1-1/2" depth x 3/4" high)
- 6" Classic Valance
- Cord lock and pulley controls

## Standard Size Limitations

Minimum Width:	8"
Maximum Width:	120"*
Minimum Height:	12"
Maximum Height (Classic):	192"
Maximum Height (Hobbled):	144"
Flush inside mount depth required:	2"
Minimum inside depth:	1/2"

See the special size limitations for Cordless ONE Controls, UpRight, Duo-Fold and Multiple Shades on One Headrail.

\*Due to the natural characteristics of natural woven material, on rare occasions a pattern is woven an inch or two narrower than 120". If you have a 118" wide order please contact customer service to check current inventory.

## Stacking Dimensions

CLASSIC ROMAN SHADE		HOBBLED ROMAN SHADE	
Height	Stack	Height	Stack
To:	To:	To:	To:
36"	9"	36"	10"
48"	11"	48"	12"
60"	12"	60"	13"
72"	13"	72"	14"
84"	14"	84"	15"
96"	15"	96"	16"
108"	16"	108"	17"
120"	17"	120"	18"
132"	18"	132"	19"
144"	19"	144"	20"
156"	20"		
178"	21"		
192"	23"		

Stacking heights are approximate.

Note: Cordless ONE Controls add 2-1/2" to the above stacking dimensions

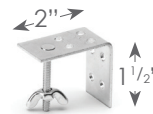
D52

## Installation Methods

**2" SCREWS** are standard for all IM shades except Cordless Shades. They are simply screwed straight up through the headrail. 3" screws are available with IM turned headrail.



**NEW YORK BRACKETS ("NY")** are standard for all OM shades with valances that have Cord lock Controls and UpRight or Cordless Shades on 1-1/2" headrails.



**"L" BRACKETS** are standard with all OM Waterfall and Duo-Fold shades.



**SPECIALTY NEW YORK BRACKETS ("SNY")** are standard for all OM Upright and Cordless Shades with 2-1/2" headrails.



**EXTENDED NEW YORK BRACKETS ("XNY")** are an alternative OM installation bracket. They extend the shade 2" out from the wall.



**FOOTLESS BRACKETS ("FB")** are an alternative IM installation bracket and are standard for IM Cordless Shades.



## Measuring Notes

- The workroom will deduct 1/2" from the width for an inside mount (IM).
- See page D50 for detailed measuring instructions.





# Natural Woven Shade Specifications and Options

## 6" Classic Valance

The 6" Classic Valance is attached to the front of Horizons Natural Woven Shades and conceals the hardware.

- Standard Height 6" tall
- Custom heights up to 10" are available at no extra charge.

### VALANCE RETURNS

Valance Returns are a no charge option on all shades. *They are supplied upon request only.*

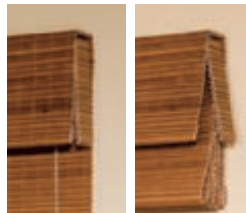
**Deluxe Returns** are attached to the face and headrail of the valance to eliminate gaps. They are approximately 1" shorter than the valance height. Deluxe Returns are standard on all Horizons Natural Shades when returns are requested. Smaller custom heights are available upon request.



Deluxe Valance Returns

### Traditional Returns

Traditional full-length returns "dog ear" when raised and are available on request.



### BACK VALANCE

An additional valance may be ordered on the back (exterior) side of waterfall or duo-fold shades to hide the hardware. Add the price of a 6" Classic Valance Only.

## Options

### UPRIGHT CONTROLS (CLUTCH)

UpRight is Horizons' convenient continuous clutch control and is available as a **no charge option.**



Minimum Width:	12"
Flush IM depth with 1-1/2" headrail:	2"
Flush IM depth with 2-1/2" headrail:	3"
Minimum IM depth:	3/4"

• **UpRight Clutch Shades up to 60" x 60" are made standard with a low profile 1-1/2" headrail. Shades over 60" x 60" will have a 2-1/2" headrail.**

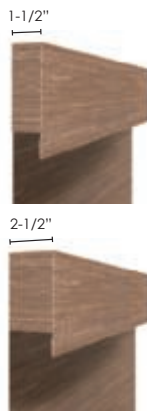
Orders that require both 1-1/2" and 2-1/2" headrails will be made with both sizes, however all 2-1/2" headrails may be requested.

• The ordered width is the shade width for OM shades. The valance will be up to 1" wider.

• For IM, the valance will be 1/2" narrower than the ordered width and the shade will be a total of 7/8" narrower (5/8" on the control side and 1/4" on the non-control side).

• The Old Upright controls are still available upon request; specify "Old UpRight" when ordering.

• Valance returns are not recommended for IM shades with UpRight as they can further increase the gap on the control side up to 1-1/2".



UpRight

Old-UpRight

## UPRIGHT CLUTCH CONTROLS CONTINUED

- UpRight controls add approximately 1" to a shade's stacking height.
- Color coordinated chain controls are standard on UpRight or White, Beige, Silver, Brass, Antique Brown or Black may be requested.

### WATERFALL STYLE

Shades may be ordered mounted to the front of the headrail, eliminating the need for a valance. With a Waterfall shade, the controls are concealed behind the shade. This is a no charge option.



### DUO-FOLD CONTROLS

Duo-Fold is Horizons' unique top-down/bottom-up cord lock control option. The shade may be raised from the bottom or lowered from the top.



- The minimum Duo-Fold width is 12", the maximum width is 84"
- Available with Cord lock operation only.
- Not available with multiple shades on one headrail.

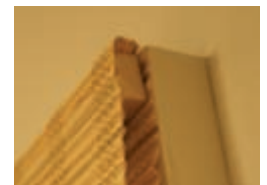
### OVERSIZED HEADRAILS

The standard headrail size is 3/4" tall by 1-1/2" depth or 3/4" tall by 2-1/2" depth with some UpRight and Cordless ONE Controls® shades.

Larger depths of 3-1/2", 5-1/2" and 7-1/4" are also available for a surcharge.

### TURNED HEADRAIL

A "Turned Headrail" makes the headrail's depth 3/4" and the height 1-1/2". This is most commonly used in cases of limited mounting depth.



• Turned headrails are not available on Cordless, UpRight and Duo-Fold shades.

- 3" screws are available for IM. 2" screws are offered for OM. New York and "L" brackets are not available.
- This is a no charge option.

### MITERED HEADRAILS

Mitered headrails are used to butt shades meeting in a corner or bay.

- Note: mitered shades usually butt together so closely that they cannot be raised to the same height.
- Any miter other than an exact 90° angle requires a template or an exact drawing of the actual angle.
- Miters are not available on Hobbled Roman Shades.
- When ordering, give the measurement from the corner to where you want the shade to end.
- Shade width is the back side of the mitered headrail.



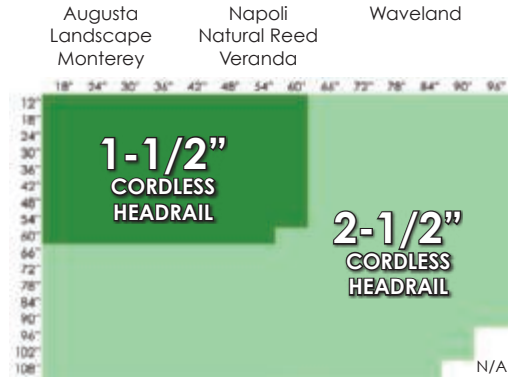


# Natural Woven Shade Options



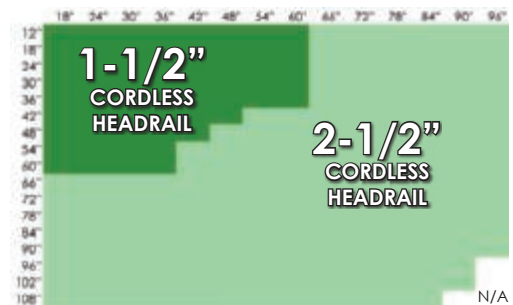
## Cordless ONE Controls® Headrail Size Charts

### REFERENCE CHART FOR THESE PATTERNS



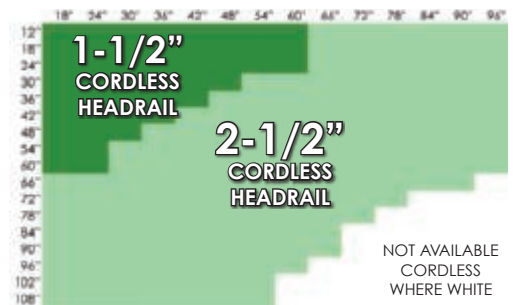
### REFERENCE CHART FOR THESE PATTERNS

Aria	Circlind	Laguna	Seclude
Beachview	Danube	Madeira	Shelter
Blakely	Deerfield	Madrid Mnt.	Solitaire
Botanica	Everglades	Matchstick	Sorrento
Brookfield	Florence	Melbourne	Sundance
Camelot	Forestglen	Northbrook	Tranquility
Cameo	Francisco	Rainforest	Vista
Cañita	Gateway	Raven	Wheatfield
Capri	Glendale	Rustic Weave	Willowbrook
Cayman	Harmony	Savannah	



### REFERENCE CHART FOR THESE PATTERNS

Aislado	Holland Mesh	Lac. Tortoise (all)
Aislado Deluxe	Key Largo	Malibu
Caribbean	Kontiki	Ribcord
Ceylon	La Playa	



## Cordless ONE Controls

Horizons' **Cordless ONE Controls®** are a patented (U.S. Patent #8,505,607 B2) lift system which completely eliminates pull cords.

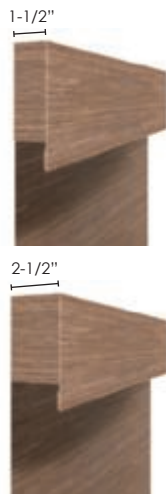
Cordless ONE Controls are now a **no charge option** on all Natural Woven Shades.

### SIZE LIMITATIONS

- Minimum Width: 18"
- Flush IM depth with 1-1/2" headrail: 2"
- Flush IM depth with 2-1/2" headrail: 3"
- Minimum IM depth: 3/4"
- Maximum Sizes: See the charts to the right. Any size in the light green or the dark green areas may have Cordless ONE Controls®.

### STACKING DIMENSIONS

Cordless ONE Controls® add approximately 2-1/2" to the stacking dimension.



### HEADRAILS SIZES

CLASSIC ROMAN SHADES will be made with either a 1-1/2" or 2-1/2" headrail depending on the shade size and pattern. See the charts to the right for headrail sizes.

Orders that require shades with both 1-1/2" and 2-1/2" headrails will be made with both sizes, however all 2-1/2" headrails may be requested.

HOBBLED ROMAN SHADES are only available with the 2-1/2" headrail.

Find out more at [horizonshades.com/cordless](http://horizonshades.com/cordless)





# Natural Woven Shade Options

## Lining Options

### ATTACHED LINING

Attached Privacy or Blackout lining is available on all shades.

- The face of the lining fabric is color-coordinated to the shade color. The back (exterior) side is neutral.
- C.O.M. linings are not accepted.

**NEW!** **OPERABLE LINING** (Classic Style Shades Only)

The exclusive operable lining option from Horizons offers the **ultimate in flexibility of privacy and light control on Natural Shades**. Easily transition from the beautiful translucency of natural woven materials to your choice of either privacy or room darkening when needed. All contained on a low profile 2-1/2 headrail.

The operable liner is constructed in a roller operating style using the same privacy and blackout materials as the attached lining option. The lining is color coordinated by the workroom and neutral to the street side.

**Natural Shade Controls:** Cordless One is Standard / Clutch is a no charge option.

**Operable Lining Controls:** Clutch operation only.

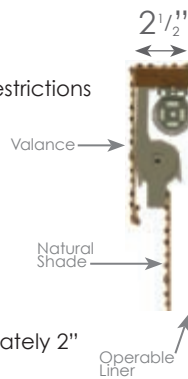
### General Specifications:

- **8" valance height is standard with operable lining.** Up to 10" in height is a no charge option. When ordering shades with operable lining in the same room with standard shades, all 8" valances may be requested.
- Operable lining features the premium hem bar. (See Section C for details)
- Hobbled style unavailable.
- Operable lining adds approximately 2" to the stacking dimension.

### Size Specifications: (Most materials)

Refer to page D54 for material specific size restrictions

Minimum Width:	18"
Maximum Width:	84"
Minimum Height:	24"
Maximum Height:	84"
Flush IM Depth Req:	3"



### Measuring Notes:

#### For an OUTSIDE MOUNT

- The headrail and valance will be approximately 2" wider than the Natural shade.
- The front shade and liner will be the exact width ordered.

#### For an INSIDE MOUNT

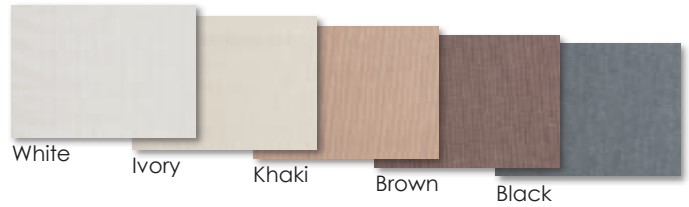
- The headrail and valance will only be 1/4" narrower than the exact width ordered. Measure the inside width very precisely at the top of the window where the headrail will be mounted.

#### Cordless One Controls or Upright Clutch Shades:

- The natural shade and liner will be 3/4" narrower than the headrail on the lining control side and 1/2" narrower on the opposite side.

## AVAILABLE LINING COLORS

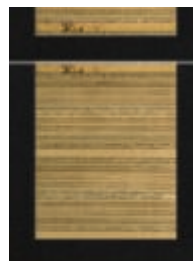
The workroom will determine the best color match or White, Ivory, Khaki, Brown or Black lining may be requested. The lining samples can also be viewed in the Horizons Natural Shade sample book or the Horizons iPad App.



## EDGE ACCENTS BANDING

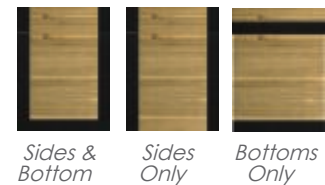
Natural Woven Shades may be enhanced with a 2" wide fabric strip fused to the edges and/or bottoms of the shade and valance.

- They are fused to the front of the shade/valance and do not wrap around to show from behind.



Standard Edge Accents Banding configuration.

Additional available configurations.



Sides & Bottom, Sides Only, Bottoms Only

## INSET EDGE ACCENTS BANDING

In addition to being offered on the edge of the shade, banding may also be inset from the edge 2". Inset bottom band is not visible when the shade is raised.



## EDGE ACCENTS BANDING FABRIC CHOICES

**Twill Tapes:** Edge Accents Banding is available in 6 standard twill tape colors. See page D42.

**Decorative Tapes:** Edge Accents Banding is also available in new Decorative Tape Styles. See the Decorative Trimmings pages in Section B.

**Horizons Soft Treatments:** Any of the non-sheer fabrics in the Horizons Soft Treatments sample book.

**C.O.M.:** Your own material may also be applied as Edge Accents Banding:

- **C.O.M. Type:** Pre-shrunk natural fabrics like cottons are best. Synthetic fabrics, very thin fabrics do not fuse well to shades and will not be accepted. Call customer service for more details.

- **C.O.M. Quantity:** Use the following formula to calculate how many yards of C.O.M. to send:  
 $(\text{The Greater of the shade Height OR Width} + 10") \div 36$

This formula is for a standard 54" wide fabric and yields enough material for up to 5 shades. Hobbled Roman Shades require adding 50% more material for the folds. **For Edge Accents yardage using decorative tapes, please call customer service.**

Send full widths of fabric and Horizons will cut it into strips. See Section B for "Procedures for sending C.O.M. to Horizons".





## CUT OUTS

- Cut Outs may be taken from any corner, edge or even the center of a shade.
- Please provide a detailed cut out diagram.



## CUT MATERIAL

Cut Material may be ordered in any pattern. There are many decorative uses like table runners, place mats, wall-coverings and craft projects.

- It may be hemmed upon request at no charge.

## MULTIPLE SHADES ON ONE HEADRAIL

Two-on-Ones & Three-on-Ones are multiple shades mounted on a single headrail, usually with a common valance.

- Provide the sizes of each individual shade AND the total width of the unit. The sizes of the individual shades must add up to the total width.
- The maximum total width for Two-on-Ones & Three-on-Ones is 144", but the common valance is limited to the width of the material shown on page D43. Valances with a butting seam are available.
- The workroom will make allowances for inside mount and the spaces between the shades (3/8").
- Price as separate shades and add the 2-on-1 or 3-on-1 surcharge from page D44.
- Two-on-One headrails are available with cord locks only if ordered with opposite end controls.
- Three-on-One headrails are only available with clutch or cordless controls.



## DECORATIVE TRIMMINGS

Decorative Trimmings (fringes, gimps, beads and tassels) are available as beautiful accents across the bottom of the shade and/or valance.

- Horizons' complete Decorative Trimmings collection is pictured in Section B.
- C.O.M. trimmings are also accepted.

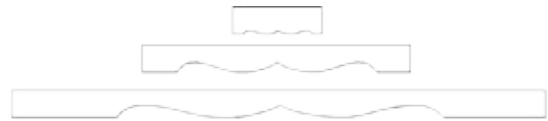


## CONTEMPO SCALLOPS

- Contempo Scallops are available in 6 standard patterns or any pattern from your template. They are available on the bottom of the shade and/or valance.



- The height of the shade is to the long point of the Contempo Scallop.
- Valances with Contempo Scallops are made with an 8" long point.
- Standard gimp is included with all Contempo Scallops. Choose a color from the Decorative Trimmings collection shown in Section B.
- Bead or tassel fringe may also be added.
- Contempo Scallops are scaled to the width of the valance or shade.



**ADDITIONAL VALANCE OPTIONS:** pages D60-D65

**MOTORIZATION:** page D68

**PRICING:** pages D44-D45



# Horizons® Twin Shade

United States Patent #8,261,808 B2

## Twin Shade

The Twin Shade is a dual shade system with a beautiful roman shade on the front and a roller shade on the back that acts like a movable lining. The front roman shade can be from either the Natural Shade, Soft Treatments or Shades of Elegance collections. Choose the back roller shade from the Shades of Elegance roller shade collection.

## Standard Features

- The patented (#8,261,808 B2) dual headrail system
- 10" Classic Valance
- Cord lock controls on the front Roman Shade
- Clutch controls on the back Roller Shade

## Size Limitations

Minimum Width: 21"	<b>IM depth required:</b>
Maximum Width: 96"	(shades up to 72" x 72") 3"
Minimum Height: 24"	(shades over to 72" x 72") 4"
Maximum Height: 96"	(shades with UpRight) 4"

## Available Patterns

- The **front shade** may be ordered in any of the Horizons Natural Shade, Soft Treatments or Shades of Elegance collections.
- The **back shade** may be ordered in any of the Shades of Elegance fabrics EXCEPT Siesta.

## Valance and Returns

- All Twin Shades will have a 10" long valance.
- Outside Mount Twin Shades will have Deluxe valance returns.
- Inside Mount Twin Shades are constructed without returns.

## Stacking Dimensions

Height To:	Stack To:
36"	13"
48"	15"
60"	16"
72"	17"
84"	18"
96"	19"

Stacking heights are approximate.

## Installation Brackets

Extended New York ("XNY") Brackets are used for OM Twin Shades due to the larger headrail size, not to increase the shade's distance from the wall.

2" Screws are standard for IM Twin Shades. Footless Brackets are an alternative IM option.

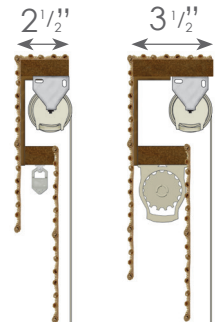
## Headrail Size

Twin Shades constructed with a 3-1/2" top headrail:

- All OM Twin Shades
- IM Twin Shades over 72" x 72"
- All Twin Shades with UpRight Clutch

Twin Shades constructed with a 2-1/2" top headrail:

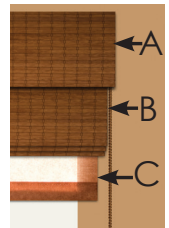
- IM Twin Shades under 72" x 72" that do not have an UpRight Clutch



## Measuring Notes

For an OUTSIDE MOUNT:

- The headrail and valance will be approximately 1" wider than the front shade on each side.
- The front shade will be the exact width ordered.
- The back shade will also be the exact width ordered.



For an INSIDE MOUNT:

- The headrail and valance will only be 1/8" narrower than the exact width ordered. Measure the inside width very precisely at the top of the window where the headrail will be mounted.
- The front shade will be 3/4" narrower than the headrail on the control side and 1/4" narrower on the opposite side.
- The back shade will be 3/4" narrower than the front shade on each side.

## Options

Available options for the **front shade**:

- Cordless ONE Controls®
- UpRight Clutch Controls
- Lining
- Edge Accents Banding
- Decorative Trimmings
- Duo-Fold

See pages D53-D56 for more details about these options

**Options NOT available on a Twin Shade:** Waterfall Style, Hobbled Style, Mitered Headrails, Turned Headrails, Multiple Shades on One Headrail, Contempo Scallops, Spring Roller Controls, Decorative Pulls and Motorization.

**PRICING:** page D44 (front), C38 (back)





# Averté Natural Fold



## Averté Natural Fold

Use Averté on a window like a drapery, on a patio door like a vertical blind or as a room divider. There are no draw cords to tangle or break!

## Standard Features

- Sturdy, light weight aluminum track
- 5% fullness
- Color coordinated wood lead rails

## Size Limitations

Minimum Width:	12"
Maximum Width:	288"
Minimum Height:	12"
Maximum Height:	120"
Minimum IM depth:	3"
Minimum Flush IM depth:	5-1/2"

## Stacking Dimensions

Width To:	Stack To:	Width To:	Stack To:	Width To:	Stack To:
36"	9"	120"	17"	216"	25"
48"	10"	132"	18"	228"	26"
60"	11"	144"	19"	240"	27"
72"	12"	156"	20"	252"	28"
84"	13"	178"	22"	264"	29"
96"	14"	192"	23"	276"	30"
108"	16"	204"	24"	288"	31"

Stacking widths are approximate.

## Installation Brackets

Wall Brackets are for all OM Averté. They are adjustable from 3" to 4-1/4" for use as an extension bracket.

Ceiling Brackets are for all IM Averté.



## Measuring Notes

- The workroom will deduct 1/4" from the width of the track for an inside mount (IM).
- The height of an outside mounted Averté is the total unit height including the track, but not the valance board height.
- For inside mount, furnish the exact opening height and Horizons will allow for the track and valance board, less a 1/2" deduction at the bottom.
- See page D50 for measuring instructions.

## Options

### SPLIT DRAW

- A split draw Averté has two center rails that join magnetically.

D58

## LINING

Privacy or Blackout lining is available on Averté.

- The face of the lining fabric is color coordinated to the Averté material color. The back (exterior) side is neutral.

## VALANCES AND TOP TREATMENTS

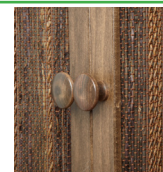
All valances and top treatments are a surcharged option on Averté. Choose from the following valance styles:

- Casual Woven Valances (page D60)
- Premium Woven Top Treatments (pages D61-D65)
- Upholstered Cornices (Section B)
- Premium Top Treatments (Section B)

- 6" Classic Valances and Hobbled Valances will come 1" wider than the Averté track. Deluxe Returns are standard on a 6" Classic Valance for Averté when returns are requested. Order other top treatments at least 3" wider than the Averté for clearance. A 5-1/2" board/return size is also recommended.

## DECORATIVE KNOBS

- Decorative Knobs are **supplied upon request only.**
- They will be positioned half way up the lead rails unless otherwise specified.



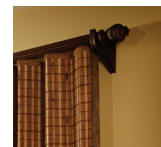
## EXTRA FULLNESS

- The standard Averté comes with 5% fullness and lays nearly flat when drawn.
- Extra fullness of 20% is available.
- Add 15% to the "Stacking Dimensions" chart for an Averté with extra fullness.

## DECORATIVE POLE TRACK

As an alternative to a valance, Averté is also available with a decorative wood pole track. The Averté track is routed into the wood pole.

- Choose from any of the finial styles and colors from the 2" Collections. See Section E.
- The maximum width is 192". Poles over 96" wide will have a center splice.
- Decorative Pole Averté are only available as OM.
- The total unit height including the decorative pole will be 1" greater than ordered height.
- The decorative pole is cut 3" wider than the ordered width. The finials add to the overall width of the unit. See the Decorative Hardware section for sizes.
- The lead (hand) rails will match your decorative hardware color choice unless otherwise specified.



**MOTORIZATION:** pages D69

**PRICING:** page D46



Horizons®

# Natural Woven Side Panels

## Natural Woven Side Panels

Natural Woven Side Panels are stationary drapery panels that are purely decorative and are designed to remain at the sides of the window.

**GROMMET STYLE PANELS** have beautiful folds created by inserting a decorative pole through grommets at the top of the panel. See the "Grommet Woven Side Panel" in the index on page D43 for a list of all patterns available as Grommet Side Panels.



**RING CLIP PANELS** are similar to the flat style of traditional side panel. They hang below the decorative pole on ring clips. All Horizons Natural Woven Shade patterns are available as Ring Clip Panels.



## Standard Features

- 2-1/2 times fullness
- Rounded, rippelfold style pleats
- Double folded side hems
- 3-1/2" Returns

## Size Limitations

Panels are available 20" wide or 40" finished width when hung. For example, a 20" panel with 2-1/2 times fullness is 50" wide when flat before hanging.

Minimum Height: 12"  
Maximum Height: 120"

## Measuring Notes

- The ordered height is the exact height of the panel, not including hardware.
- Natural Woven Side Panels and Horizons Decorative Hardware are available for outside mount installations only.

## Options

### Edge Accents and Decorative Trimming

The leading edge(s) and/or the stationary edges of Natural Woven Side Panels may be embellished with 2" wide Edge Accents Banding and/or Decorative Trimmings.

- See page D55 for recommended Edge Accents fabrics.
- See Section B for the Decorative Trimmings collection.
- For C.O.M. fabric Edge Accents send the full height of the side panel.

### Lining

Privacy or Blackout lining is available on all panels.

- The face of the lining fabric is color-coordinated to the shade color. The back (exterior) side is neutral.
- C.O.M. linings are not accepted.

## Grommet Style Panels

### HARDWARE

Grommet Side Panels may be mounted on Horizons' 3/4" metal rods, 1-3/8" wood poles or 2" poles.

### GROMMET COUNT

A 20" wide grommet panel will have 8 grommets.  
A 40" wide grommet panel will have 16 grommets.

### GROMMET SIZE & COLOR

See Section B for grommet size and color options.

## Ring Clip Style Panels

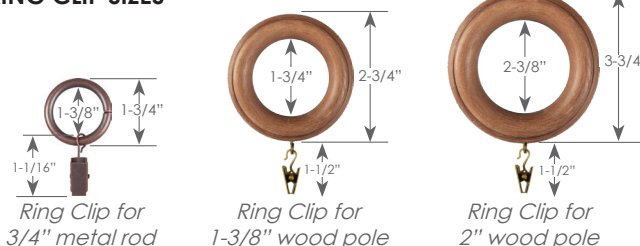
### HARDWARE

Ring Clip Style Side Panels may be mounted to any pole in the entire Horizons Decorative Hardware collection.

### RING CLIP COUNT

8 rings are recommended for a 20" panel.  
16 rings are recommended for a 40" panel.  
These counts will produce 3-1/2" folds. Fewer rings will produce larger folds, more will produce smaller folds.

### RING CLIP SIZES



**PRICING:** page D47



# Horizons® Valance Options

## Casual Woven Valances

Casual Valances include the **6" Classic Valance** and the **Double and Triple Hobbled Valances**. In addition to being offered as part of a Natural Woven Shade, the Casual Woven Valances are also available as separate, board-mounted top treatments.



## Standard Specifications

- Premium stained or painted wood headrail (1-1/2" depth x 3/4" high)

## Size Limitation

Minimum Width:	6"
Maximum Width:	120"
6" Classic Valance Height:	6" Standard (Custom valance heights up to 10" are available at no added charge)
Double Hobbled Valance Height:	12"
Triple Hobbled Valance Height:	18"

**Multiple valances may be butted together to go over a wider Averté.**

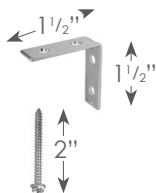
## Measuring Notes

- The workroom will deduct 1/2" from the width for an inside mounts (IM).

## Installation Brackets

**"L" BRACKETS** are for all OM valances.

**2" SCREWS** are for all IM valances.



## Options

### VALANCE RETURNS

The 6" Classic Valance comes with Deluxe Returns when returns are requested. Traditional returns are also available upon request. See page D53 for more details. Double and Triple Hobbled valances are made with traditional returns only.

### EXTENDED PROJECTION

The standard board on a Casual Valance is 3/4" tall and has a projection of 1-1/2". Larger projections of 2-1/2", 3-1/2", 5-1/2", 7-1/4" or 9-1/4" are also available.

### EDGE ACCENTS & INSET EDGE ACCENT BANDING

Banding is available on the sides and/or bottom of the 6" Classic Valance. They are also available on the edges only of the Double or Triple Hobbled Valances. See page D55.



*Edge Accents banding shown on a Double Hobbled Valance*

### VALANCE TIES

A pair of 2" wide Valance Ties are optional and are located 6" to 16" in from each end of the valance proportionate to the width of the valance. They are offered in the same fabric options as Edge Accents Banding.



*Valance Tie shown on a 6" Classic Valance*

### CONTEMPO SCALLOPS

Contempo Scallops are available on classic valances. See page D56.

### DECORATIVE TRIMMINGS

Decorative Trimmings (fringes, gimps, beads and tassels) are available as beautiful accents across the bottom of the shade and/or valance.



- Horizons' complete Decorative Trimmings collection is pictured in Section B.
- C.O.M. trimmings are also accepted.

**PRICING:** page D48





## Premium Woven Top Treatments



### Style: A1

#### WIDTH

Minimum: 24"  
Maximum: 120"

#### HEIGHTS

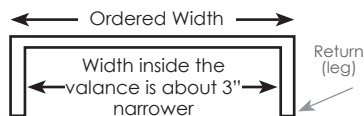
10", 14" or 18"

#### RETURN/BOARD SIZES

3-1/2" returns are standard.  
1-1/2", 2-1/2", 5-1/2", 7-1/4" and  
9-1/4" returns are also available.

#### MEASURING NOTES

- Outside mount only
- This style is constructed with solid wood legs for returns. Add a minimum of 3" to the width to allow for their thickness.
- A1 is mounted with "L" brackets like a traditional cornice.



#### LINING

This style is constructed with blackout lining.

#### EDGE ACCENTS BANDING

2" Edge Accents Banding is optional on the sides and/or bottom of the treatment. See page D55 for Edge Accent Banding guidelines.

#### DECORATIVE TRIMMINGS

Bead fringes, tassel fringes, traditional fringes or gimp may be placed along the bottom edge of the treatment. See the Decorative Trimmings pages in Section B for more information.

#### VALANCE TIES

A pair of 2" valance ties may be added with or without tails. Choose any fabric from the Horizons Soft Treatments line or C.O.M.



Valance Tie without Tail



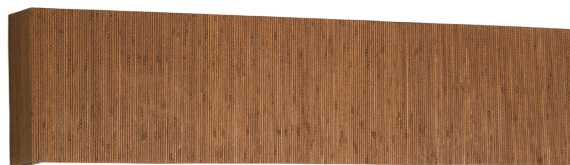
Valance Tie with Tail

#### C.O.M. YARDAGE REQUIREMENTS

Location	Yardage
Valance Ties	1
Banding on Sides	1
Banding on Bottom	1

If material cannot be cut and seamed, use this formula for yardage for Banding on the Bottom: width + 30".

**PRICING:** page D48



Natural Woven material is railroaded.

### Style: A2

#### WIDTH

Minimum: 24"  
Maximum: 192"

#### HEIGHTS

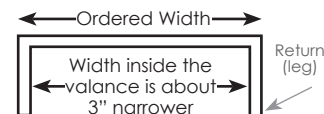
10", 14" or 18"

#### RETURN/BOARD SIZES

3-1/2" returns are standard.  
1-1/2", 2-1/2", 5-1/2", 7-1/4" and  
9-1/4" returns are also available.

#### MEASURING NOTES

- Outside mount only
- This style is constructed with solid wood legs for returns. Add a minimum of 3" to the width to allow for their thickness.
- A2 is mounted with "L" brackets like a traditional cornice.



#### LINING

This style is constructed with blackout lining.

#### EDGE ACCENTS BANDING

2" Edge Accents Banding is optional on top and/or bottom of the treatment. See Page D55 for Edge Accents Banding guidelines.

#### DECORATIVE TRIMMINGS

Bead fringes, tassel fringes, traditional fringes or gimp may be placed along the bottom edge of the treatment. See the Decorative Trimmings pages in Section B for more information.

#### VALANCE TIES

A pair of 2" valance ties may be added with or without tails. Choose any fabric from the Horizons Soft Treatments line or C.O.M.



Valance Tie without Tail



Valance Tie with Tail

#### C.O.M. YARDAGE REQUIREMENTS

Location	Yardage
Valance Ties	1
Banding Top only	1
Banding Bottom only	1
Banding Top & Bottom	2

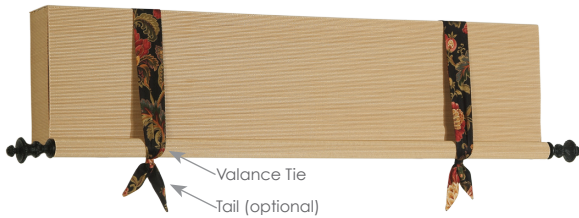
If material cannot be cut and seamed, use this formula for yardage for Banding on the Bottom: width + 30".

**PRICING:** page D48





## Premium Woven Top Treatments



### Style: A3

#### WIDTH

Minimum: 24"  
Maximum: 120"

#### HEIGHTS

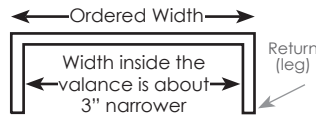
10", 14" or 18"

#### RETURN/BOARD SIZES

3-1/2" returns are standard.  
1-1/2", 2-1/2", 5-1/2", 7-1/4" and  
9-1/4" returns are also available.

#### MEASURING NOTES

- Outside mount only
- This style is constructed with solid wood legs for returns. Add a minimum of 3" to the width to allow for their thickness.
- The width does not include the finials on the pole. See Decorative Hardware (Section E) for sizes and selections.
- A3 is mounted with "L" brackets like a traditional cornice.



### Style: A4

#### WIDTH

Minimum: 24"  
Maximum: 120"

#### HEIGHTS

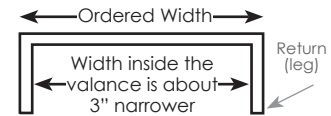
14" with 4-3/4" folds  
18" with 6" folds

#### RETURN/BOARD SIZES

3-1/2" returns are standard.  
1-1/2", 2-1/2", 5-1/2", 7-1/4" and  
9-1/4" returns are also available.

#### MEASURING NOTES

- Outside mount only
- This style is constructed with solid wood legs for returns. Add a minimum of 3" to the width to allow for their thickness.
- A4 is mounted with "L" brackets like a traditional cornice.



#### LINING

This style is constructed with blackout lining.

#### DECORATIVE POLE

The pole at the bottom is optional. Choose any wood or metal pole style from the Horizons Decorative Hardware collection (Section E).

#### VALANCE TIES

- This style requires a pair of valance ties. Ties are 2" wide and may be made with or without tails. Choose any fabric from the Horizons Soft Treatments line or C.O.M.



Valance Tie without Tail

Valance Tie with Tail

#### C.O.M. YARDAGE REQUIREMENTS

Location	Yardage
Valance Ties	1

#### LINING

This style is constructed with blackout lining.

#### DECORATIVE TRIMMINGS

Bead fringes, tassel fringes, traditional fringes or gimp may be placed along the bottom edge of the treatment. See the Decorative Trimmings pages in Section B for more information.

#### VALANCE TIES

- A pair of 2" wide valance ties may be added with or without tails. Choose any fabric from the Horizons Soft Treatments line or C.O.M.



Valance Tie without Tail

Valance Tie with Tail

#### C.O.M. YARDAGE REQUIREMENTS

Location	Yardage
Valance Ties	1

PRICING: page D48

PRICING: page D48





## Premium Woven Top Treatments



Natural Woven material is railroaded.

Fabric sash (standard on this style)

### Style: A5

#### WIDTH

Minimum: 24"  
Maximum: 192"

#### HEIGHTS

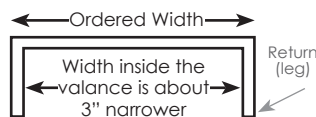
14" or 18"

#### RETURN/BOARD SIZES

3-1/2" returns are standard.  
1-1/2", 2-1/2", 5-1/2", 7-1/4" and 9-1/4" returns are also available.

#### MEASURING NOTES

- Outside mount only
- This style is constructed with solid wood legs for returns. Add a minimum of 3" to the width to allow for their thickness.
- A5 is mounted with "L" brackets like a traditional cornice.



#### LINING

This style is constructed with blackout lining.

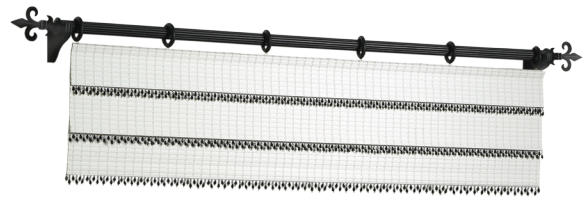
#### FABRIC SASH

The 3-1/2" tall fabric sash is automatically part of the A5. They are proportional to the width of the valance and range from 6" wide for the narrowest width to 12" wide for the widest. Choose any standard (non-sheer) fabric from the Horizons Soft Treatments line or C.O.M.

#### C.O.M. YARDAGE REQUIREMENTS

Location	Yardage
Fabric Sash	1

If material cannot be cut and seamed, use this formula for yardage: width + 30".



### Style: A6

#### WIDTH

Minimum: 24"  
Maximum: 120"

#### HEIGHTS

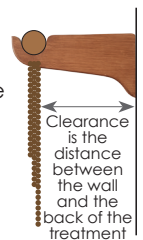
10" with 3-3/8" layers  
14" with 4-5/8" layers  
18" with 6" layers  
The height does not include the pole and rings.

#### MEASURING NOTES

- Outside mount only
- The width does not include the finials on the pole. See Decorative Hardware (Section E) for sizes and selections.
- A6 is mounted with drapery pins attached to rings on a decorative pole.

#### CLEARANCE

- If ordered with a 2" pole, the clearance will be 4-1/8" for standard brackets or 7-1/8" for extension brackets.
- If ordered with a 1-3/8" pole, the clearance will be 3-3/4" for standard brackets or 6-1/2" for extension brackets.
- If ordered with a 3/4" metal rod the clearance may be adjusted from 3-3/4" to 5-3/4".
- Please note: the A6 does not have valance returns.



#### LINING

This style is constructed with blackout lining.

#### DECORATIVE POLE

Choose any style of Horizons Decorative Pole or Rod. Rings will automatically be included and are spaced approximately every 12" (Section E).

#### DECORATIVE TRIMMINGS

Bead fringes, tassel fringes, traditional fringes or gimp may be placed along the bottom edge of the treatment. See the Decorative Trimmings pages in Section B for more information.

PRICING: page D48

PRICING: page D48





## Premium Woven Top Treatments



Style: A7

### WIDTH

Minimum: 24"  
Maximum: 120"

### HEIGHTS

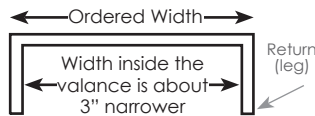
18" long point, 8" short point

### RETURN/BOARD SIZES

3-1/2" returns are standard.  
1-1/2", 2-1/2", 5-1/2", 7-1/4" and  
9-1/4" returns are also available.

### MEASURING NOTES

- Outside mount only
- This style is constructed with solid wood legs for returns. Add a minimum of 3" to the width to allow for their thickness.
- A7 is mounted with "L" brackets like a traditional cornice.



### LINING

This style is constructed with blackout lining.

### EDGE ACCENTS BANDING

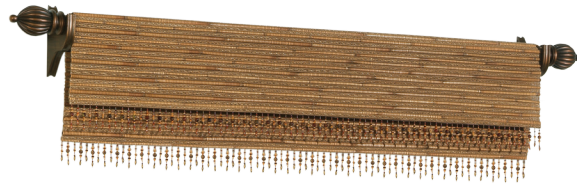
Not applicable

### DECORATIVE TRIMMINGS

Trim is required along the bottom edge. Simple color-coordinated gimp is standard. Bead fringes, tassel fringes, traditional fringes or gimp may optionally be chosen. See the Decorative Trimmings pages in Section B for more information.

PRICING: page D48

D64



Style: A8

### WIDTH

Minimum: 24"  
Maximum: 120"

### HEIGHTS

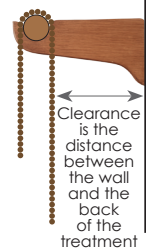
Back panel: 10", 14" or 18"  
The front panel is 4" shorter than the back panel.

### MEASURING NOTES

- Outside mount only
- The width does not include the finials on the pole or the brackets. See Decorative Hardware (Section E) for sizes and selections.
- A8 is draped over and fastened to a decorative wood pole.

### CLEARANCE

- If ordered with a 2" pole, the clearance will be 3" for a standard bracket or 6" for an extension bracket.
- If ordered with a 1-3/8" pole, the clearance will be 2-3/4" for a standard bracket or 5-1/2" for an extension bracket.
- Please note: the A8 does not have any returns.



### LINING

Blackout lining is automatically included on the back panel.

### DECORATIVE POLE

Choose any 1-3/8" or 2" Horizons Decorative wood pole. Metal poles are not an option.

### EDGE ACCENTS BANDING

2" Edge Accents Banding is optional on the sides and/or bottom of the treatment. See page D55 for Edge Accent Banding guidelines.

### DECORATIVE TRIMMINGS

Bead fringes, tassel fringes, traditional fringes or gimp may be placed along the bottom edge of the front and/or back panel. See the Decorative Trimmings pages in Section B for more information.

PRICING: page D48





## Premium Woven Top Treatments



Natural Woven material is railroaded.

Edge Accents Banding (optional)

### Style: A9

#### WIDTH

Minimum: 30"  
Maximum: 192"

#### HEIGHTS

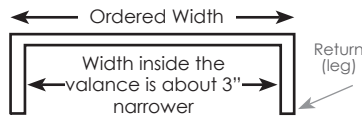
10", 14" or 18"

#### MEASURING NOTES

3-1/2" returns are standard.  
1-1/2", 2-1/2", 5-1/2", 7-1/4" and 9-1/4" returns are also available.

#### MEASURING NOTES

- Outside mount only
- This style is constructed with solid wood legs for returns. Add a minimum of 3" to the width to allow for their thickness.
- A9 is mounted with "L" brackets like a traditional cornice.



#### LINING

This style is constructed with blackout lining.

#### EDGE ACCENTS BANDING

2" Edge Accents Banding is optional on the bottom of this treatment. See Page D55 for Edge Accents Banding guidelines.

#### DECORATIVE TRIMMINGS

Bead fringes, tassel fringes, traditional fringes or gimp may be placed along the bottom edge of the treatment. See the Decorative Trimmings pages in Section B for more information.

#### DECORATIVE ACCENT FOLDS

The A9 always has 3 decorative accent folds. They are proportional to the width of the valance and range from 6" wide for the narrowest width to 12" wide for the widest.

#### C.O.M. YARDAGE REQUIREMENTS

Location	Yardage
Banding at Bottom	1

If material cannot be cut and seamed, use this formula for yardage: width + 30".

PRICING: page D48



### Style: A10

#### WIDTH

Minimum: 24"  
Maximum: 120"

#### HEIGHTS

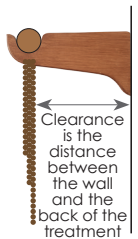
10", 14" or 18"

#### MEASURING NOTES

- Outside mount only
- The width does not include the finials on the pole or brackets. See Decorative Hardware (Section E) for sizes and selections.
- A10 is draped over and fastened to a decorative wood pole.

#### CLEARANCE

- If ordered with a 2" pole, the clearance will be 5-1/4" for a standard bracket or 8-1/4" for an extension bracket.
- If ordered with a 1-3/8" pole, the clearance will be 4-3/4" for a standard bracket or 7-1/2" for an extension bracket.
- Please note: the A10 does not have valance returns.



#### LINING

This style is constructed with blackout lining.

#### DECORATIVE POLE

Choose any 1-3/8" or 2" Horizons Decorative wood pole. Metal poles are not an option.

#### VALANCE TIES

- This style requires a pair of valance ties. Ties are 2" wide and may be made with or without tails. Choose any fabric from the Horizons Soft Treatments line or C.O.M.



Valance Tie without Tail

Valance Tie with Tail

#### C.O.M. YARDAGE REQUIREMENTS

Location	Yardage
Valance Ties	1

PRICING: page D48



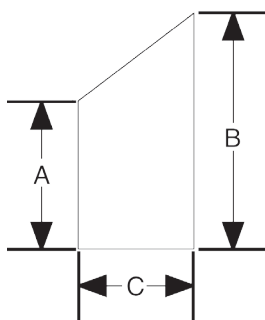
# Horizons® Angle Top Shades

## Angle Top Shades

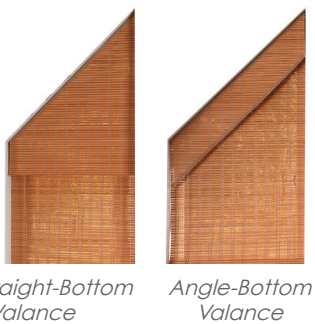
• For an Angle Top Shade, please supply all 3 measurements ("A", "B" and "C") as shown.

• The maximum width (C) is 72".

• Price an Angle Top shade using the straight width (C) and the tallest height (B) from the standard price charts on page D44 plus the Angle Top surcharge.



• Specify "Straight-Bottom" or "Angle-Bottom" valance.

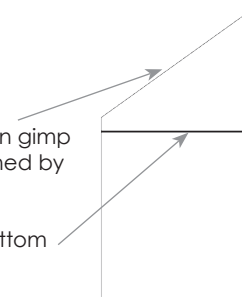


• The workroom will automatically deduct 1/2" from the width for an inside mount.

• Angle Top Shades are constructed with pulleys and cord cleats. They cannot be operated with a standard cord lock or any other control mechanism.

• All Angle Top Shades must be trimmed in gimp at the top. The best color will be determined by the workroom.

• The shade can only be raised to the bottom edge of the valance. The top portion is stationary.



## Options

Available options for the Angle Top Shade:

- Lining
- Edge Accents Banding (not on angled edge of valance)
- Decorative Trimmings

See pages D53-D56 for more details about these options

**PRICING:** page D44 (see pricing notes above)



# Horizons® Arch Top Shades



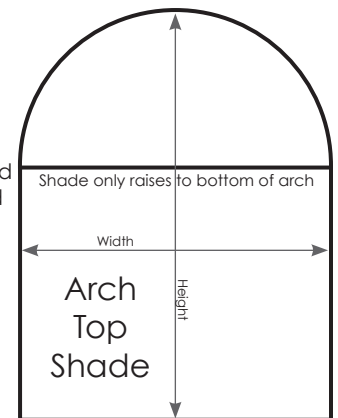
Ribcord Light Walnut

## Arch Top Shades & Stationary Arches

- A template is required for all Arch Top Shades and Stationary Arches.
- Stationary Arches do not raise or lower.
- Arch Top Shades will only raise to the bottom of the valance. The top portion is stationary.
- To price a Stationary Arch or Arch Top Shade use the shade width and the total height of the unit (including the arch) and price from the standard shade price chart on page D44 plus the Arch Top surcharge.
- The maximum width of an Arch Top Shade or a Stationary Arch is 72".
- For an inside mount Arch Top Shade, the workroom will deduct 1/4" around the perimeter of the arch from the template. A 1/2" deduction will be made to the shade's width.
- For an inside mount Stationary Arch Top, the workroom will deduct 1/4" around the perimeter of the template.



- Arch Top Shades are constructed with pulleys and cord cleats. They cannot be operated with a standard cord lock or any other control mechanism.
- All Arches must be trimmed in gimp at the top. The best color will be determined by the workroom.



## Options

Available options for the Arch Top Shade:

- Lining
- Edge Accents Banding (not on curved edge of arch)
- Decorative Trimmings

See pages D53-D56 for more details about these options

**PRICING:** page D44 (see pricing notes above)





# Motorized Shades

## Motorized Natural Roman Shades

Horizons Natural Woven Roman Shades are available with either BATTERY powered motors or A/C (plug-in) powered motors. The remote control is radio frequency.

## Standard Specifications

- Reliable Somfy® motor system
- Premium stained or painted wood headrail (3-1/2" depth x 3/4" high)
- 8" Classic Valance
- Pre-programmed for easy installation

## Size Limitations

	Battery	A/C
Minimum Width:	15"	28"
Minimum Height:	24"	24"
Maximum Width:	72"	120"
Maximum Height:	144"	144"
Flush IM depth required:	4"	4"
Minimum IM depth:	2"	2"

**The maximum total size of a battery operated shade is 24 square feet and 120 square feet for A/C.**

## Controls

- The remote control for all motorized shades are radio frequency (not infrared) and come pre-programmed for your shades.
- Wall switch controls also available.
- One remote control is able to independently operate multiple shades in a single room.



Remote Controls



Wall Switch Controls

## Stacking Space

Motorization adds approximately 4" to the shade's stacking dimension shown on page D52.

## Measuring Notes

- Record the measurements of multiple shades in one room in sequence -- left to right -- on the order form. The workroom will pre-program the remote control in that sequence.
- Due to the 3-1/2" headrail, Extended New York Brackets are required for OM installation, but do not increase the shade's distance from the wall. 2" Screws are recommended for IM installation.
- Specify the name of the room each shade will be in. This is required information for programming.

## Options

All of the standard shade options on pages D53-D55 are available on motorized shades EXCEPT Cordless ONE Controls®, duo-fold, UpRight, turned headrail, hold downs and miters.

## Battery Powered Notes

- Each shade includes a reloadable battery pack with 8 lithium "AA" batteries. The life of the battery pack is approximately 2 years, under normal daily use. Replacement batteries may be purchased at any store that sells lithium batteries.



**• Hobbled Roman Shades are not available battery powered. They must be A/C.**

## A/C (Plug-In) Notes

- A/C shades come standard with a 6-foot long power cord that plugs into a standard wall outlet. Lengths of 3', 10' or 24' are also available. The shades may optionally be hard-wired to the wall by a professional electrician.
- To avoid possible interference, A/C motors should be at least 19" apart.
- The standard motor location is on the right side of the shade. Motor location on the left may be specified.

**PRICING:** Price shade from pages D44-D45 plus motorization on page F1





D70

April 2017